



**After two and a half years of planning, design, and construction, Bernard Tschumi's BLUE Residential Tower is now open on the Lower East Side.**

The seventeen-story tower contains thirty-two apartments and rises to a height of 181 feet. This is Tschumi's first high-rise structure, and his second in New York City, where his main office is located. BLUE also marks Tschumi's first residential structure.

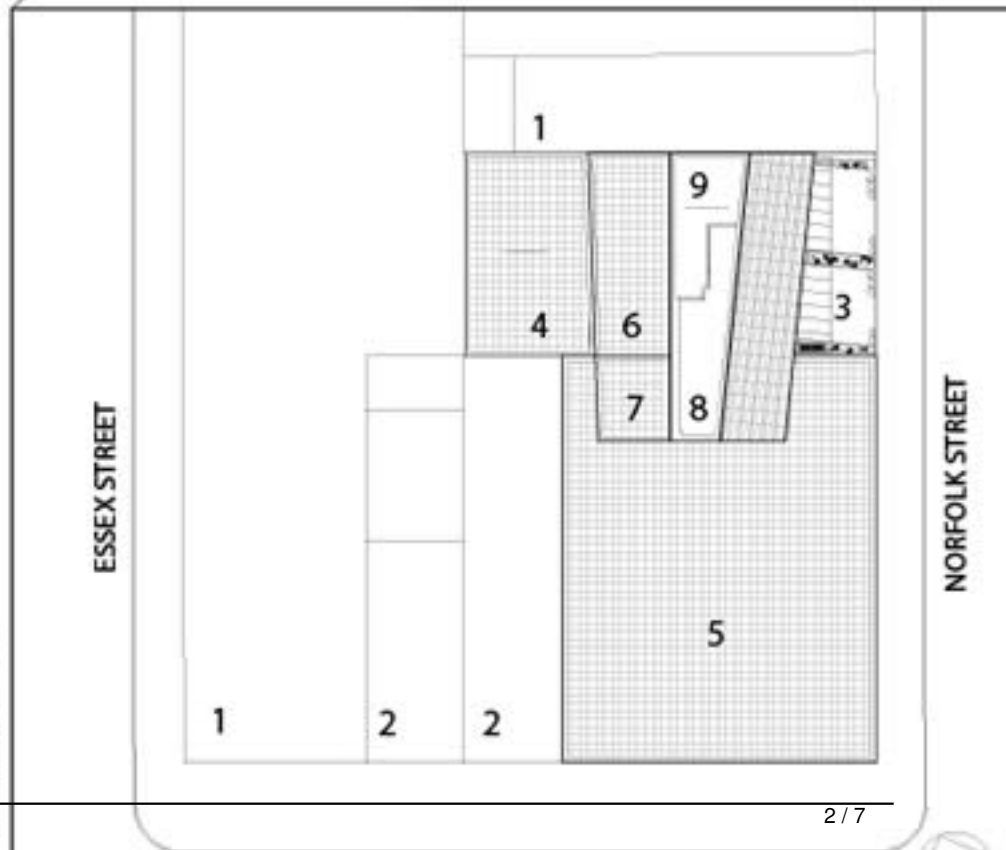
Despite the constraints of New York City zoning law and market-driven commercial requirements, Tschumi devised an original envelope pattern and distinctive shape in order to simultaneously conform to a strict building code and differentiate the building from similar high-rise structures. The strategy also creates a highly specific architectural statement that responds to the eclecticism of the historic Lower East Side neighborhood. The building's signature pixelated façade reflects a mosaic of the diverse community around it while simultaneously blending into the sky, in a way that both echoes and defers to the vibrant dynamism of downtown New York City.



**CITY PLAN**



**NEIGHBORHOOD PLAN**



- LEGEND:**
- 1. EXISTING 1-STORY BUILDING
  - 2. EXISTING 2-STORY BUILDING
  - 3. 1ST FLOOR ENTRY PLAZA
  - 4. TERRACE @ 11' ABOVE GRADE
  - 5. TERRACE @ 42' ABOVE GRADE
  - 6. TERRACE @ 124' ABOVE GRADE
  - 7. ROOF @ 146' ABOVE GRADE
  - 8. ROOF @ 177' ABOVE GRADE

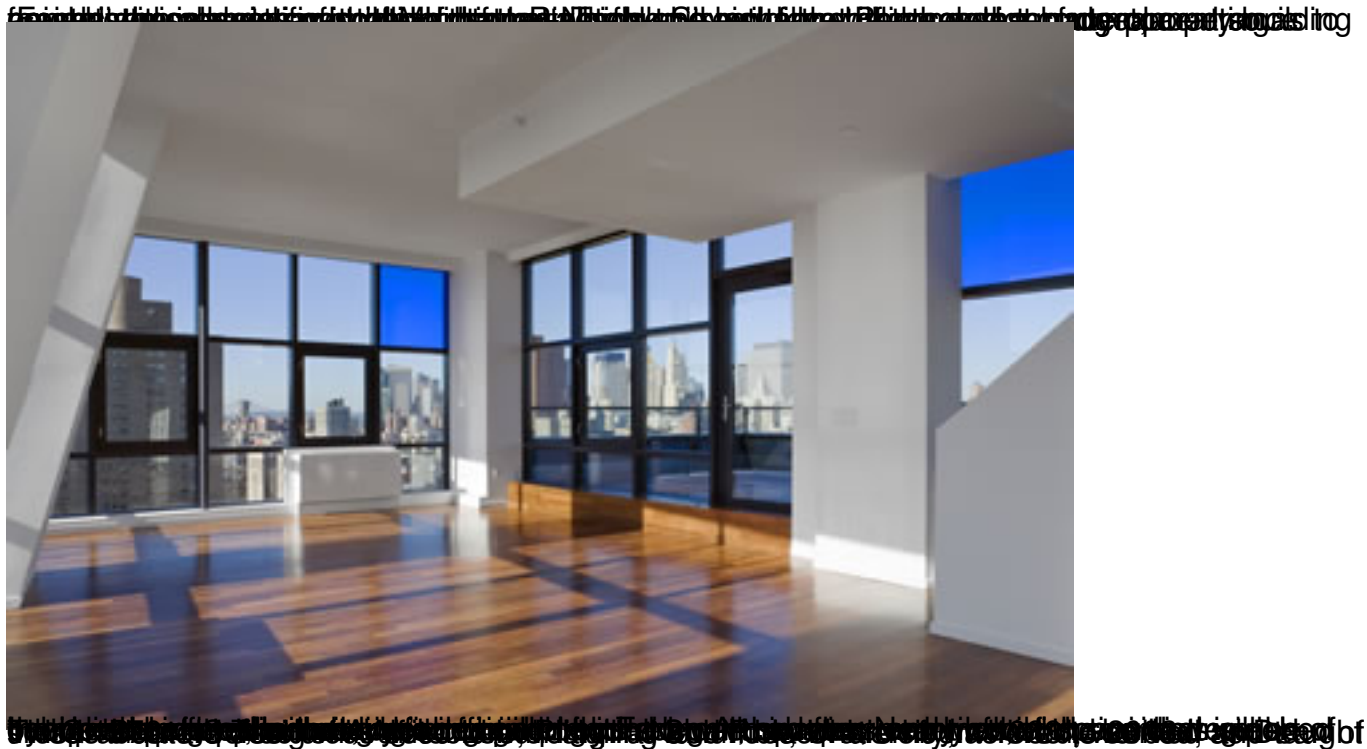
**SITE PLAN**



# BLUE by Bernard Tschumi opens on Manhattan's Lower East Side

Sunday, 27 January 2008 19:00 - Last Updated Friday, 20 November 2009 19:28

---



# BLUE by Bernard Tschumi opens on Manhattan's Lower East Side

Sunday, 27 January 2008 19:00 - Last Updated Friday, 20 November 2009 19:28

---



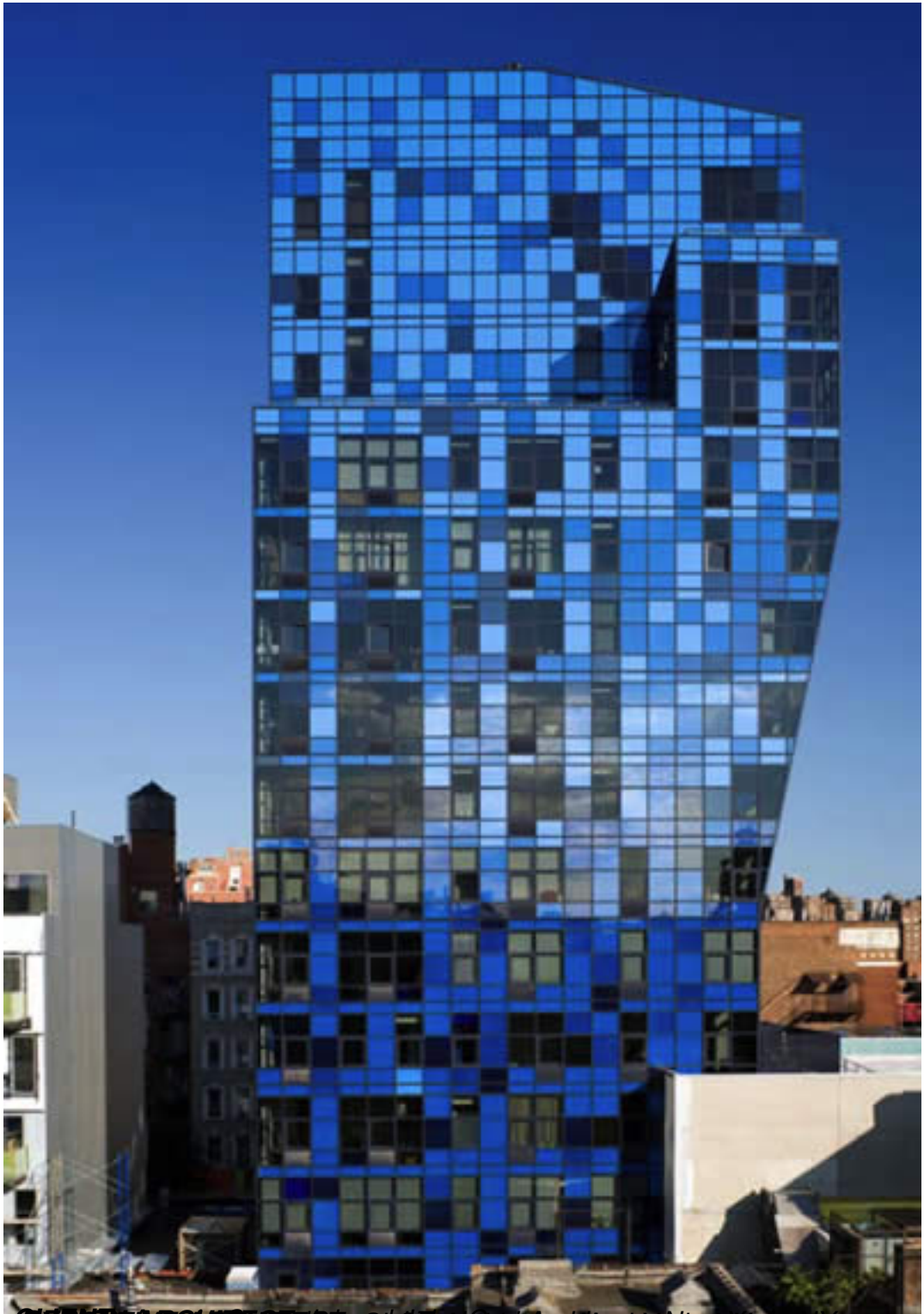
# BLUE by Bernard Tschumi opens on Manhattan's Lower East Side

Sunday, 27 January 2008 19:00 - Last Updated Friday, 20 November 2009 19:28

---



*[The following text is a distorted, mirrored, and illegible watermark or artifact overlaid on the bottom of the image.]*



**More On Bernard Tschumi Architects:**

[Bernard Tschumi's Profile](#)

**[Concert Hall in Limoges, France](#)**