

New Centre for Student Life Re-integrates Campus, City



Gwathmey Siegel & Associates Architects (GSAA), have just finished work on a new Student Center for Cleveland State University in downtown Cleveland. Working with firm Braun & Steidl Architects, GSAA has designed a contemporary structure to give a new sense of place to the university—and reconnect the university to the city of Cleveland.

Marking the start of the second phase of CSU's master plan to reorient its campus, the 138,000-square-foot center is designed to enhance the campus' urban profile. Fronting on Euclid Avenue, downtown's main commercial thoroughfare, GSAA's center should function as a public gateway, creating an open link with the surrounding city while offering a wide range of services to students and faculty.

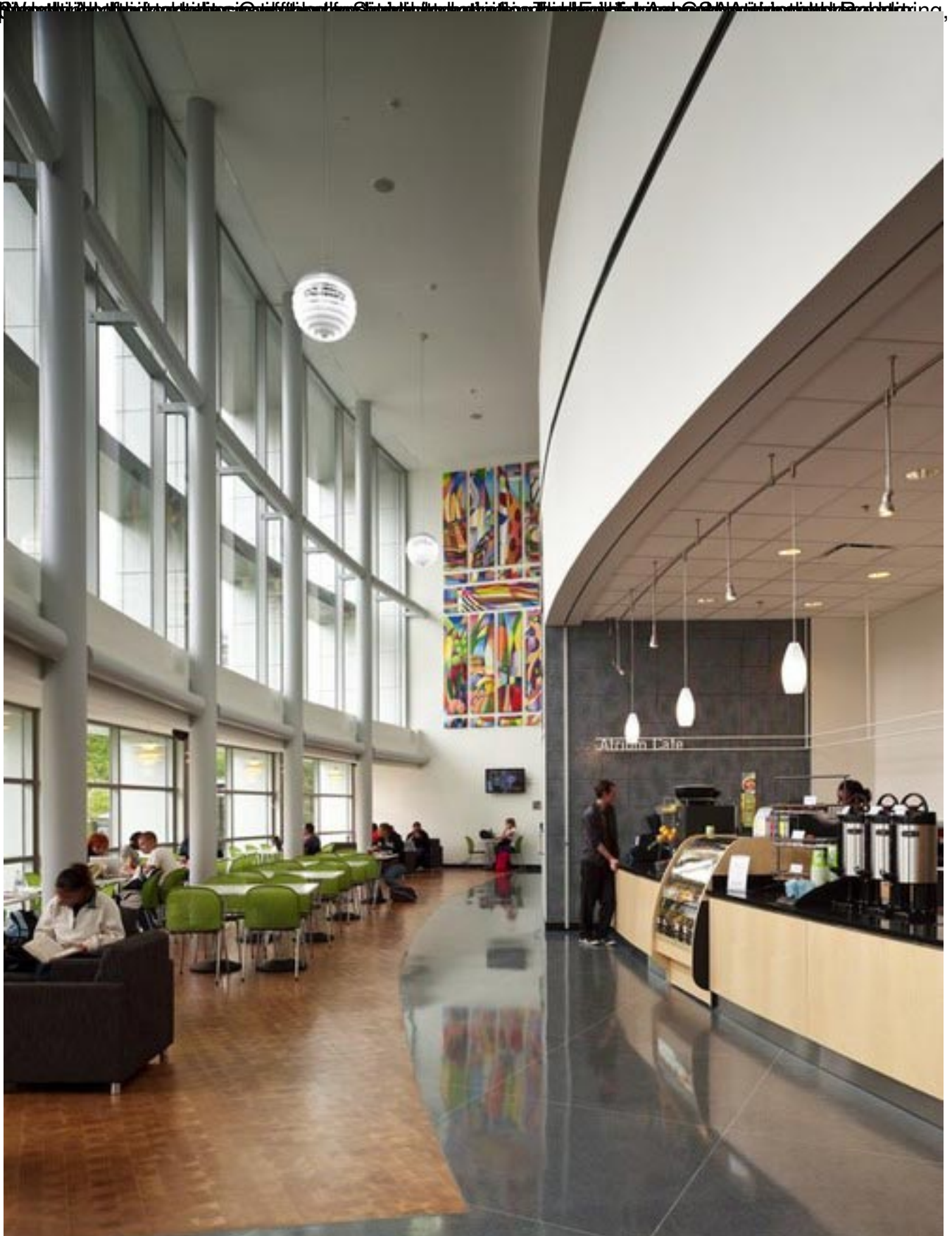


©/A photo of the Cleveland State University Student Center building. The building features a prominent curved facade with large glass windows and a brick section. A tall, slender tower with 'CSU' branding is visible in the background. The sky is overcast with grey clouds. In the foreground, there is a paved plaza with some greenery and a few people walking.



From the tower, students can see the football stadium, the main building, the library, the hotel, and the city.







© 2010 Gwathmey Siegel & Associates Architects. All rights reserved. This is a photograph of the Cleveland State University Student Center building. The building is a modern, multi-level structure with a curved ceiling and wooden floor. The space is open-plan and features a central seating area with circular tables and a lounge area with sofas. A balcony on the upper level is labeled "Events" and "Lounge". The architecture is clean and modern, with large windows and a prominent wooden column.