



Here is a detailed look at Zaha Hadid Architects' first completed project in England, the Evelyn Grace Academy in Brixton, south London for ARK Schools.

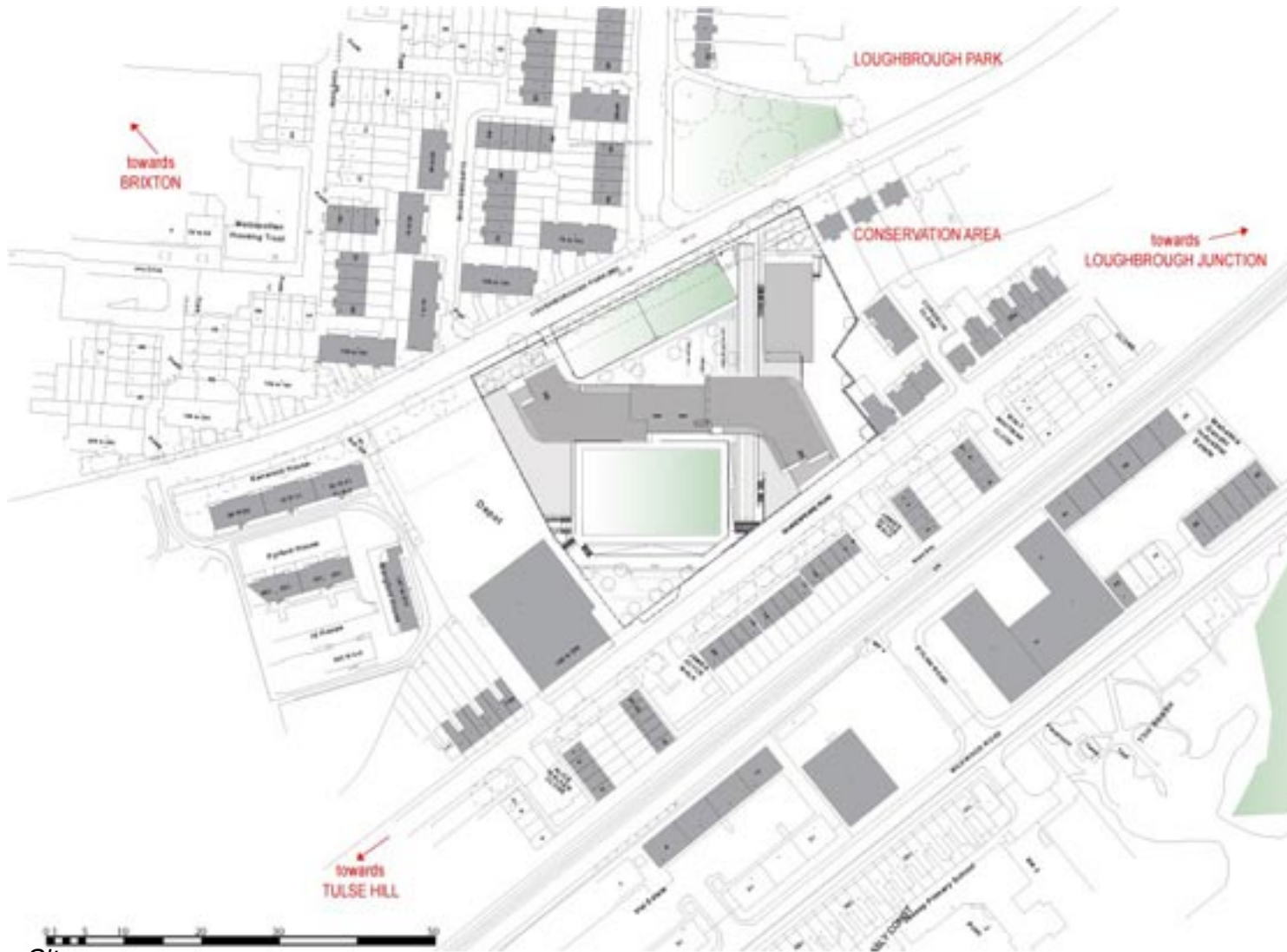
Designed for 1200 pupils, the Evelyn Grace Academy in Brixton, London Borough of Lambeth, wants to broaden not only the educational diversity of this active and historical part of London but also augments the built environment in a predominantly residential area.

This Academy presents itself as an open, transparent and welcoming addition to the community's local urban regeneration process. The dynamic distribution of the spaces, follows the functional organisation of the school.

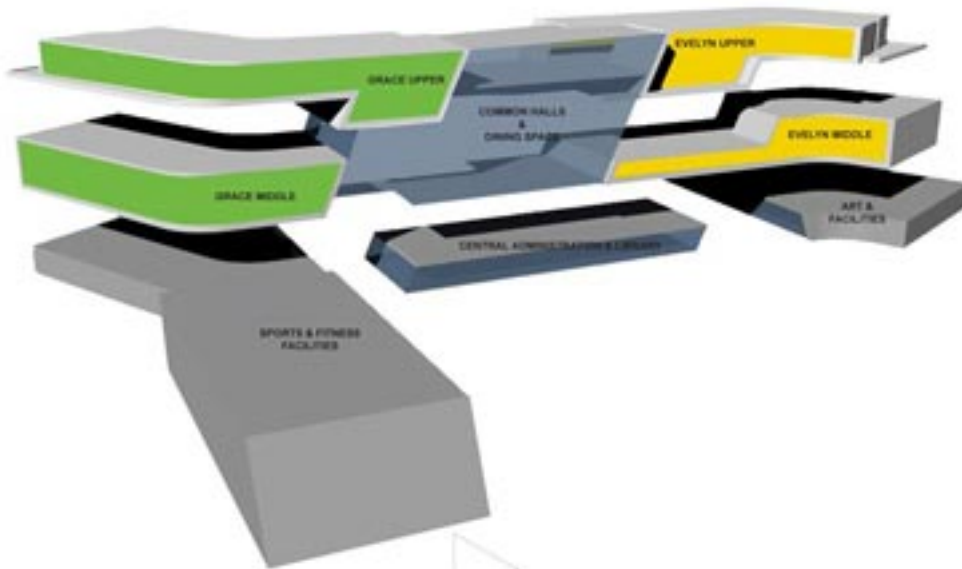
{sidebar id=2}
{sidebar id=1}



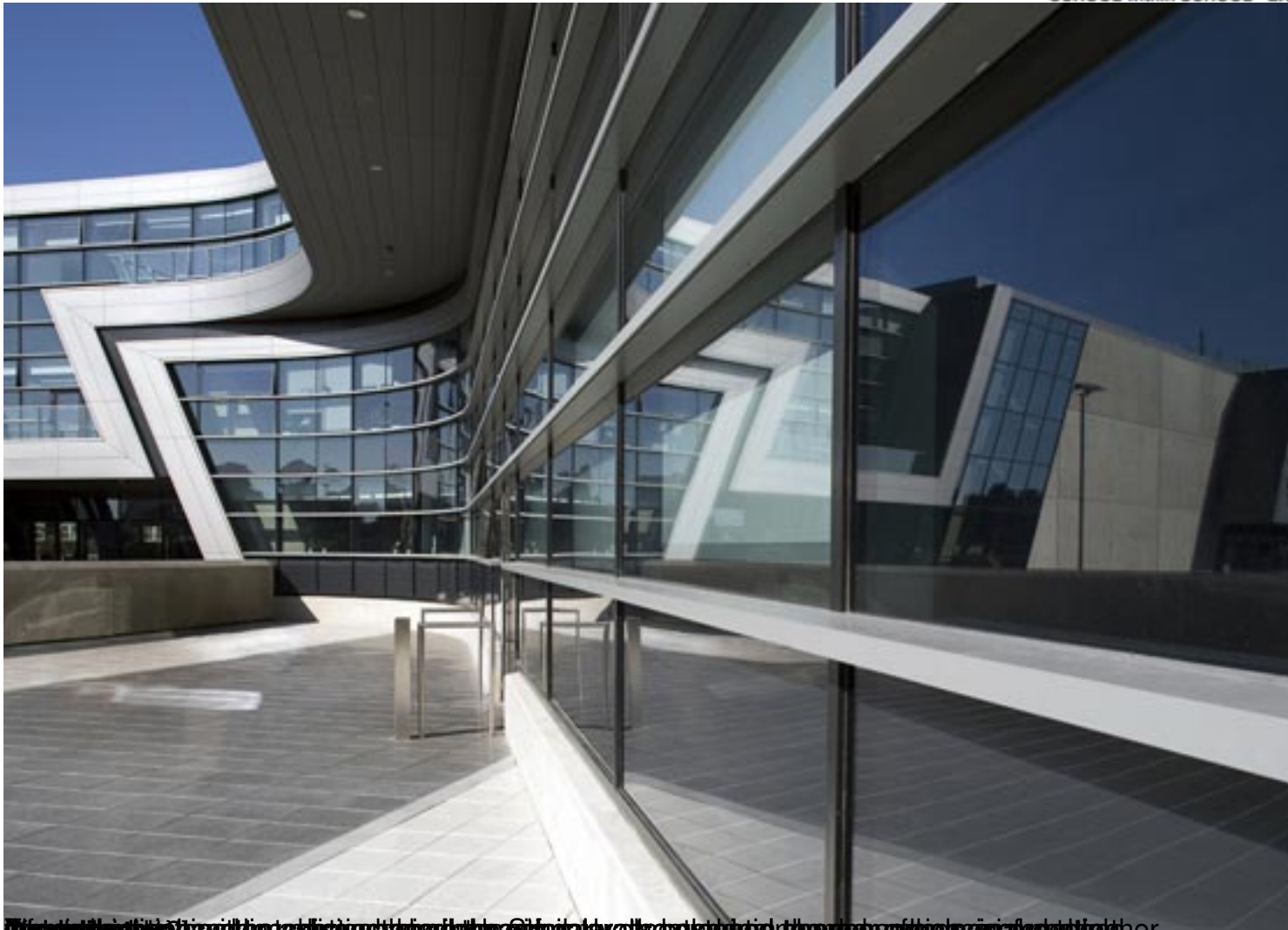
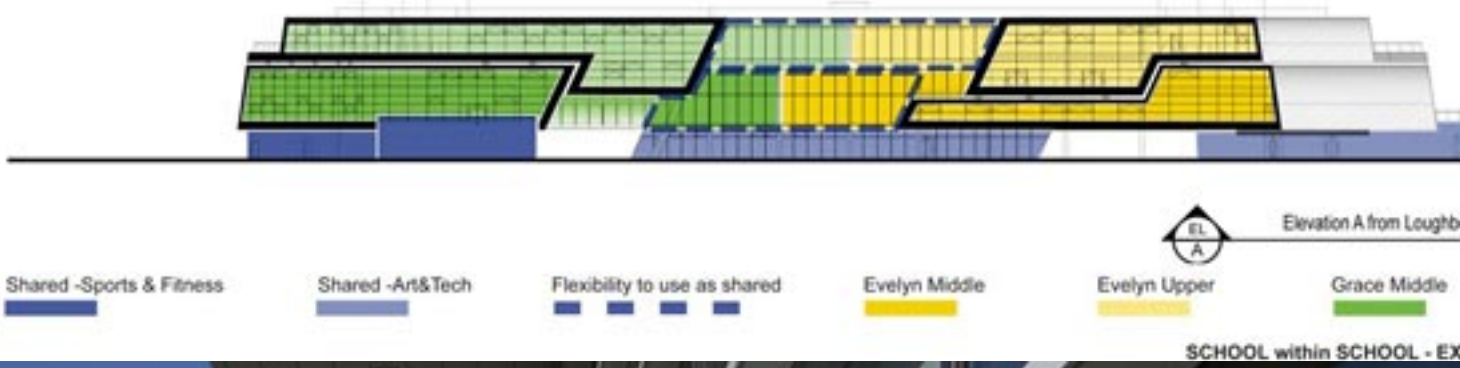
Spelling of the word 'Evelyn' is incorrect. The correct spelling is 'Evelyn'.



Site



get this project to the point where it is ready to be built. The design team has been working on the project for a long time and has been able to secure the necessary funding and permissions. The project is now in the final stages of construction and is expected to be completed in the next few months.



© Zaha Hadid Architects. All rights reserved. This image is for informational purposes only and does not constitute an offer or any other financial product or service. Please contact your broker for more information.











The lockers are arranged in a grid pattern and are accessed by the staff as they follow the central core.



Stop and think about the implications of the building's design for the community and the environment. How does the building's design reflect the school's values and mission? How does the building's design contribute to the school's overall identity and reputation? How does the building's design impact the surrounding community and the environment? How does the building's design reflect the school's commitment to excellence and innovation? How does the building's design contribute to the school's overall success and growth? How does the building's design impact the school's financial performance and sustainability? How does the building's design reflect the school's commitment to social responsibility and community engagement? How does the building's design contribute to the school's overall impact on the world? How does the building's design impact the school's reputation and brand? How does the building's design reflect the school's commitment to excellence and innovation? How does the building's design contribute to the school's overall success and growth? How does the building's design impact the school's financial performance and sustainability? How does the building's design reflect the school's commitment to social responsibility and community engagement? How does the building's design contribute to the school's overall impact on the world?



Started from the initial brief to the final design and construction. The project was initially conceived as a school for the visually impaired.

Conceptual diagrams

{gallery}Gal/100405{/gallery}

Plans, Sections, and Elevations

{gallery}Gal/100406{/gallery}

Larger photographs

{gallery}Gal/100404{/gallery}