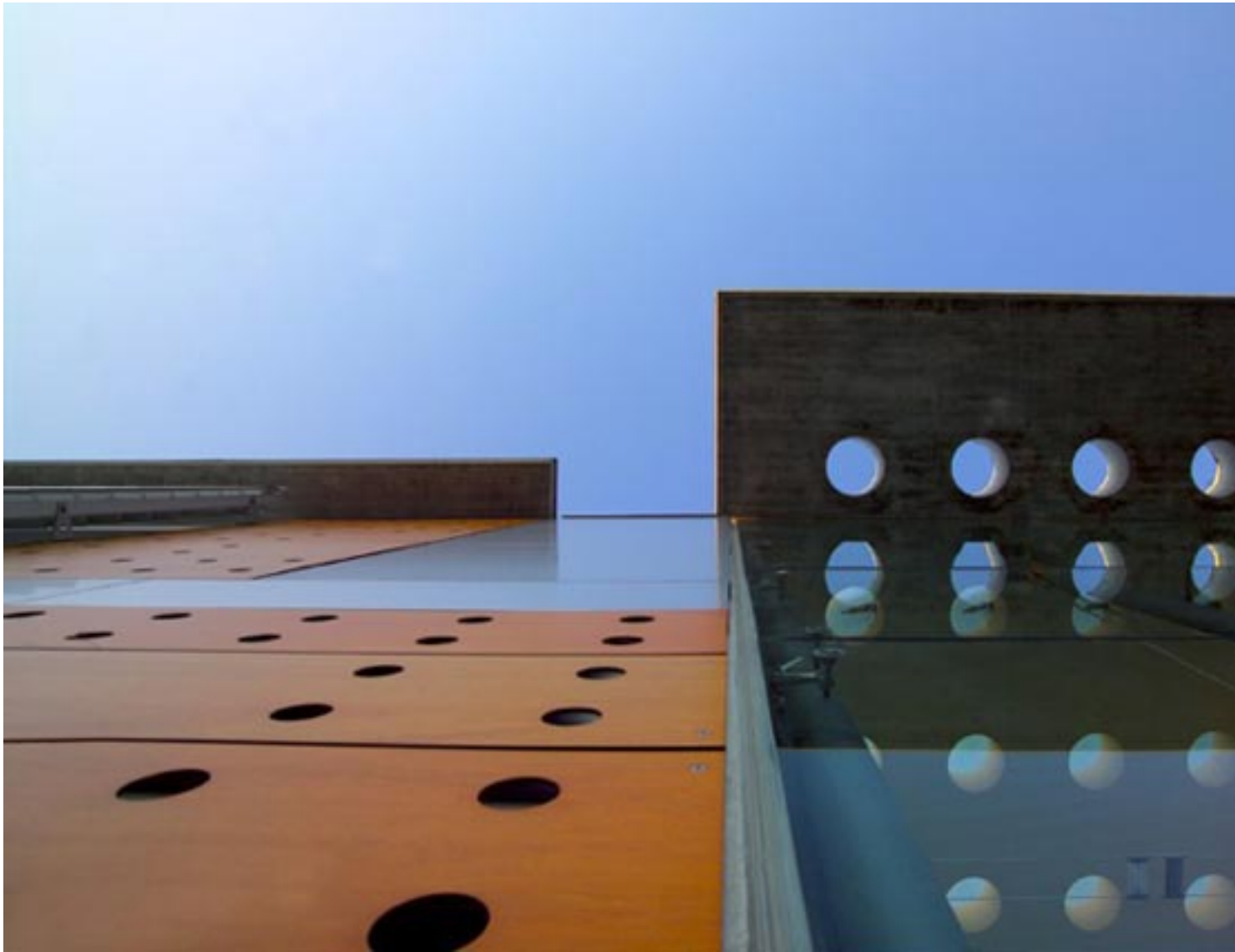


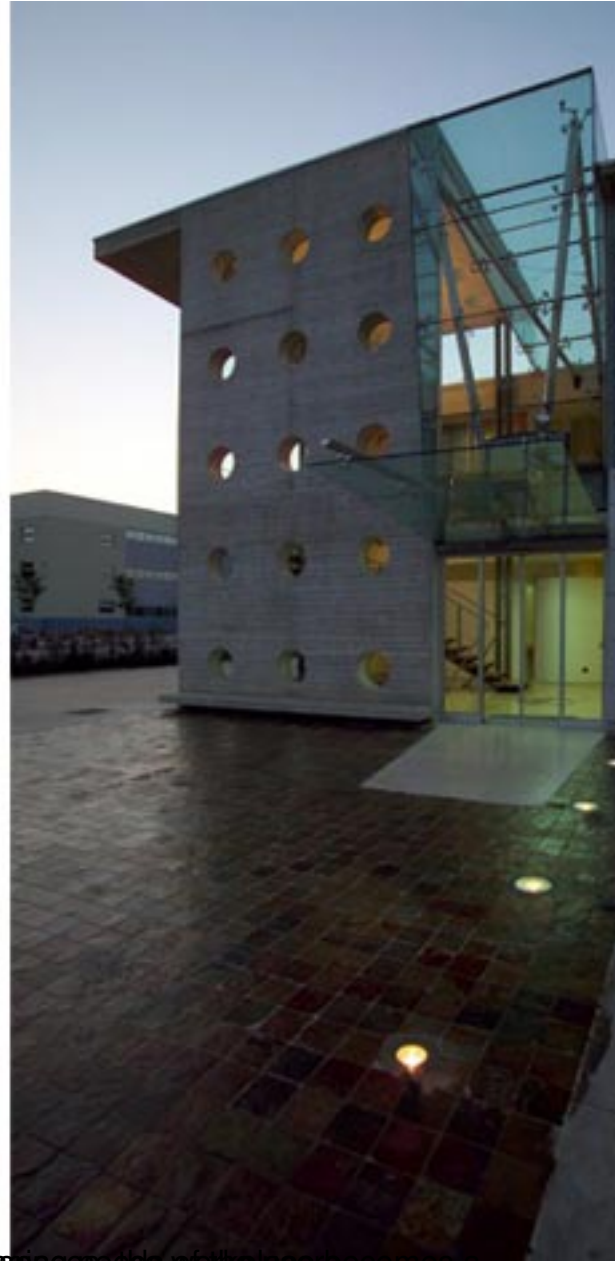


Designing the new building for Lavaal's offices was a good occasion for the architects to research his own interpretation of a contemporary office building. The work environment, conditions, and expectations are continually changing and according to Giovanni Vaccarini, the mutation is not in the future, it just belongs to the present.

{sidebar id=2}

{sidebar id=1}



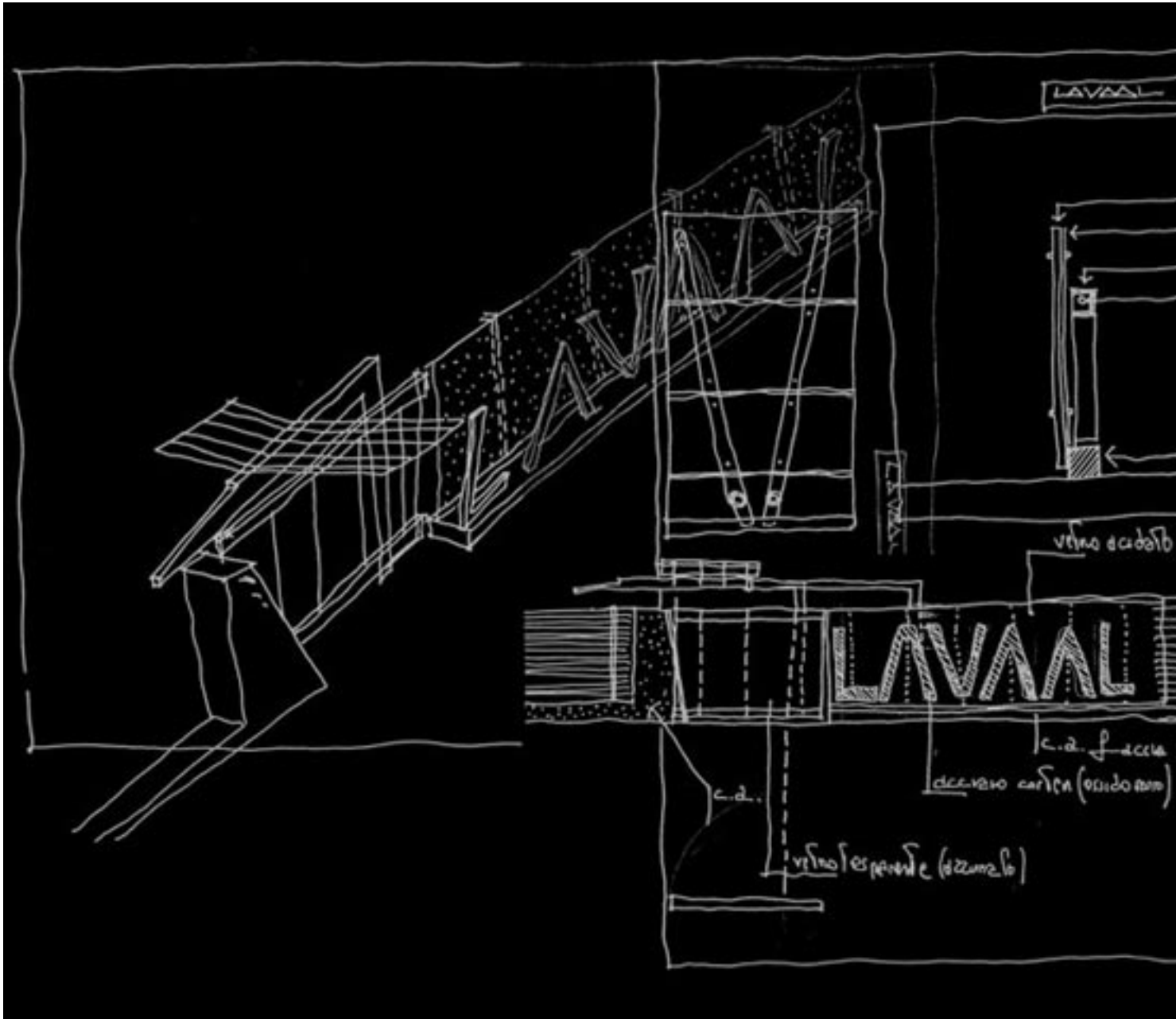


Resistance from viable capabilities is adapted to the local situation by generating a workspace becomes a









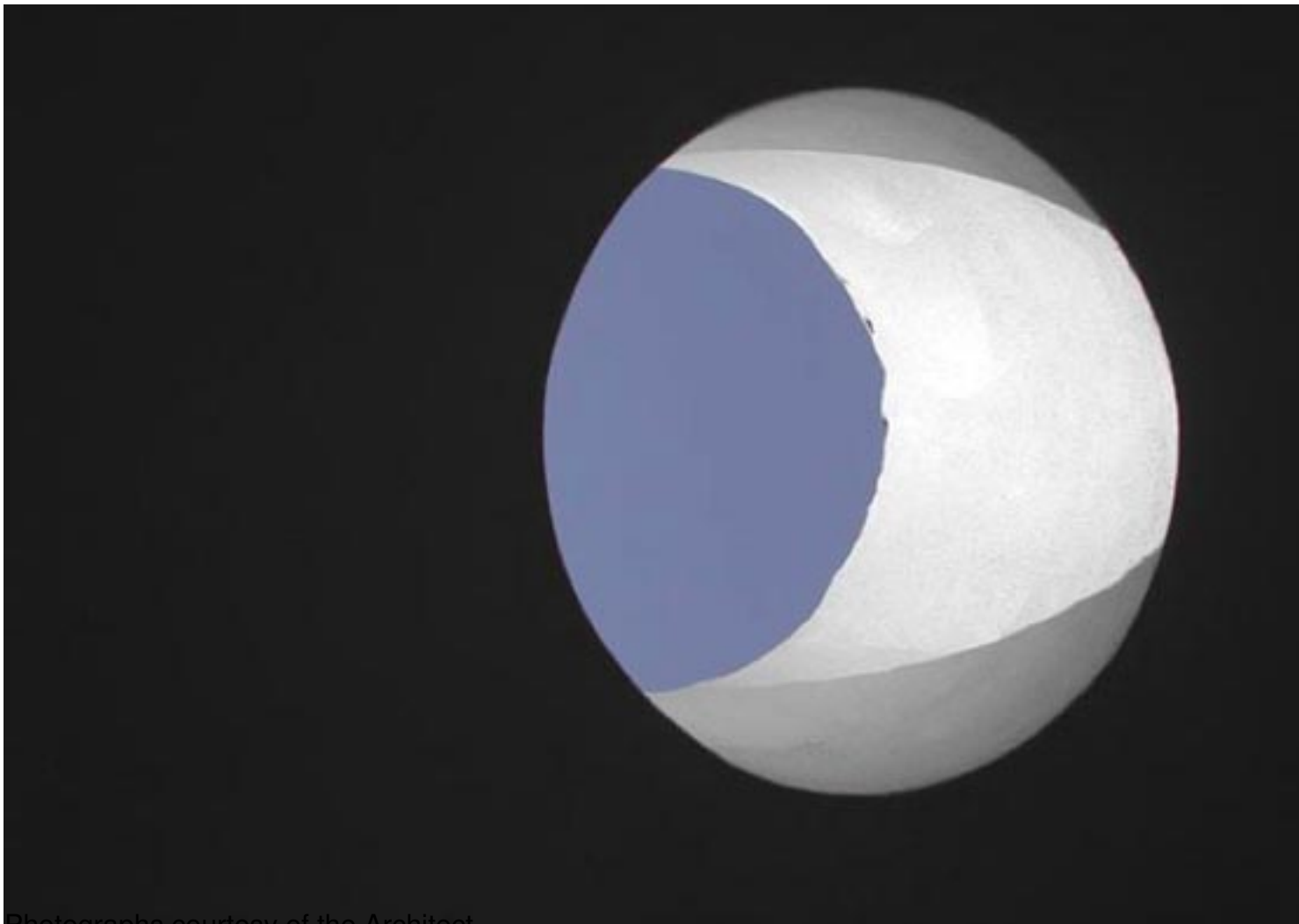




Overall the building reflects the minimalist windows and the interplay of materials and light, typical of the architect's style in other projects. We depict







Photographs courtesy of the Architect