

**This colorful project regroups the two animal refuges in Amsterdam creating the largest pound in the Netherlands.**

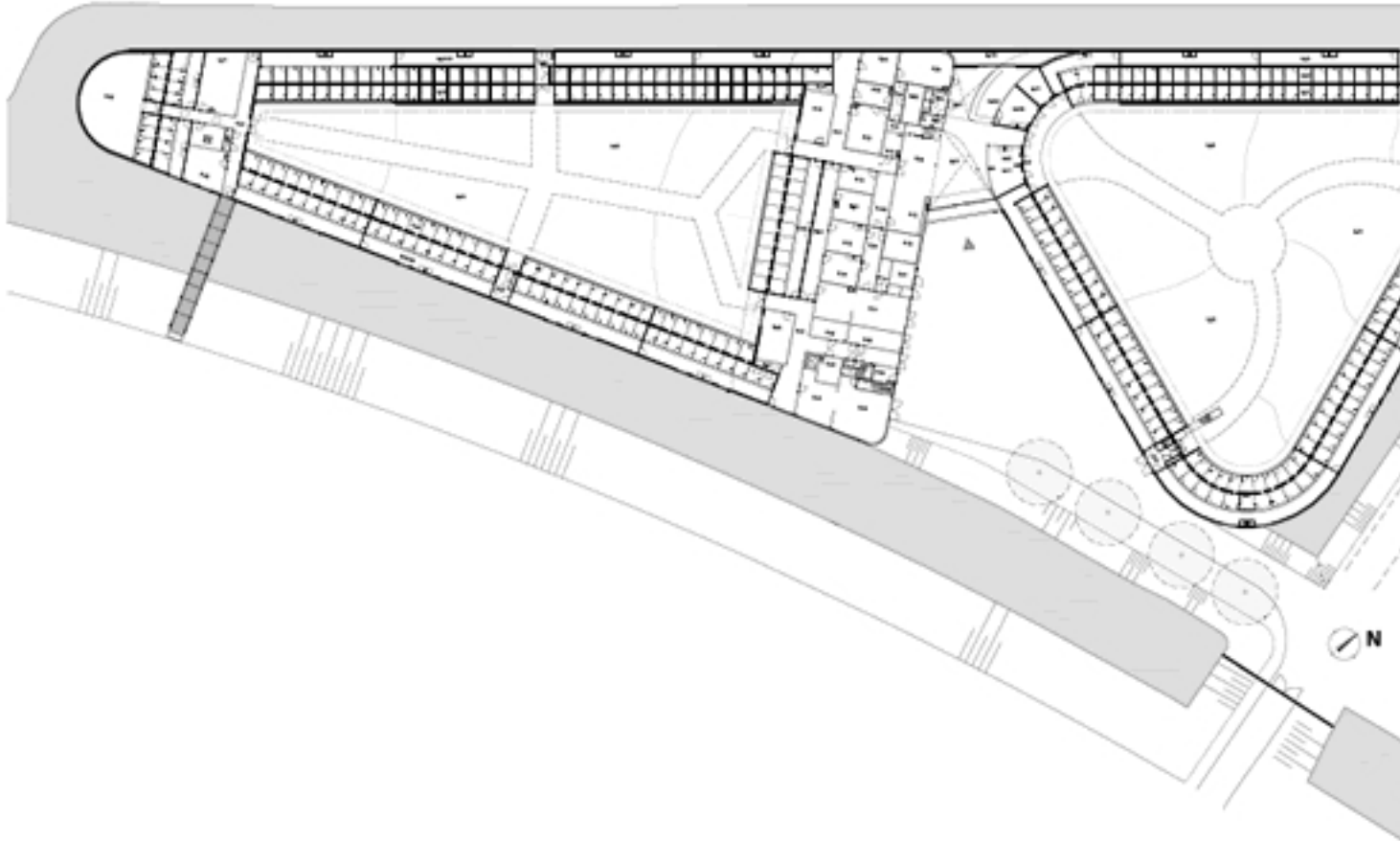


The plot is on fringes of the city. Shaped like a wedge, it was apparently impossible to fit the functions of the animal shelter.

All photographs are courtesy of [Luuk Kramer](#)

The “comb model” usual for this function consists of a long service corridor, with a repetition of

kennels positioned perpendicular to the corridor and separated by small outside spaces. Railings prevail and dominate the perceptual experience going through such a model rendering an appearance reminiscent of incarceration facilities.





The main building is a bit of a challenge for the architects, as the building is designed to be a long, thin

© 2008 Arons en Gelauff Architecten. All rights reserved. This document is the property of Arons en Gelauff Architecten and is intended for the use of the client only. It is not to be distributed or used for any other purpose without the written consent of Arons en Gelauff Architecten.



© 2008 Arons en Gelauff Architecten. All rights reserved. This document is the property of Arons en Gelauff Architecten and is intended for the use of the client only. It is not to be distributed or used for any other purpose without the written consent of Arons en Gelauff Architecten.



~~Project: Animal Refuge Centre Amsterdam, Berg, van Arons en Gelauff Architecten, Amsterdam, 2008~~