



Designed by the Los Angeles based firm of Oyler Wu and situated in the heart of Taipei, this project strives to rethink the typology of housing tower as a tall box with repetitive balconies, as is the case with most housing in the city of Taipei.

This proposal utilizes geometry and materiality to accommodate the needs of the tenants but also to create a scheme that is not based on repetition.

All the illustrations are courtesy of Oyler Wu Collaborative

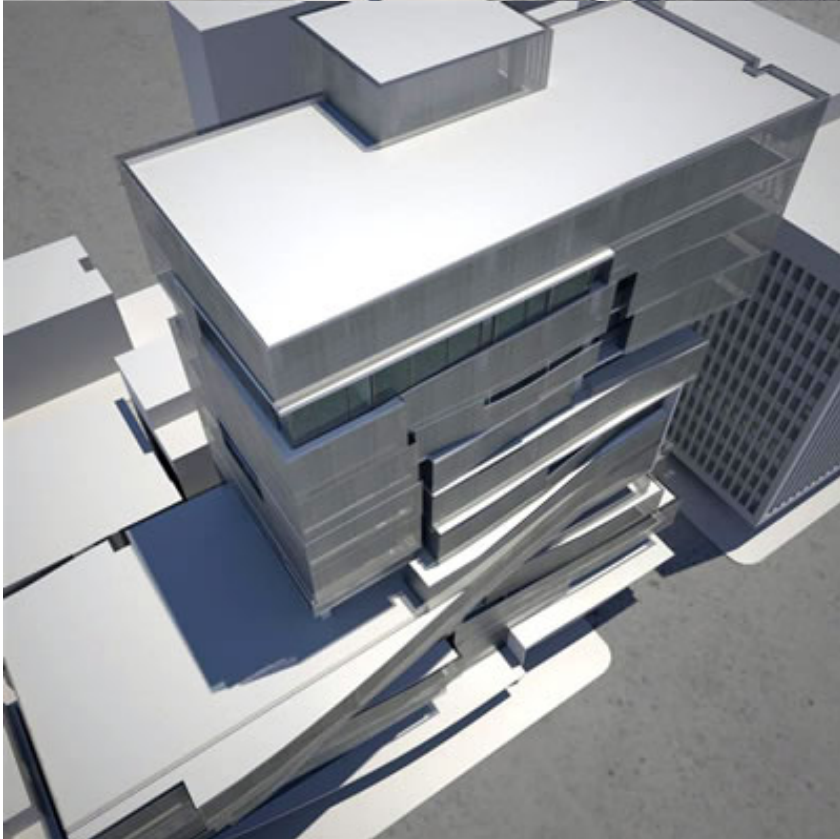
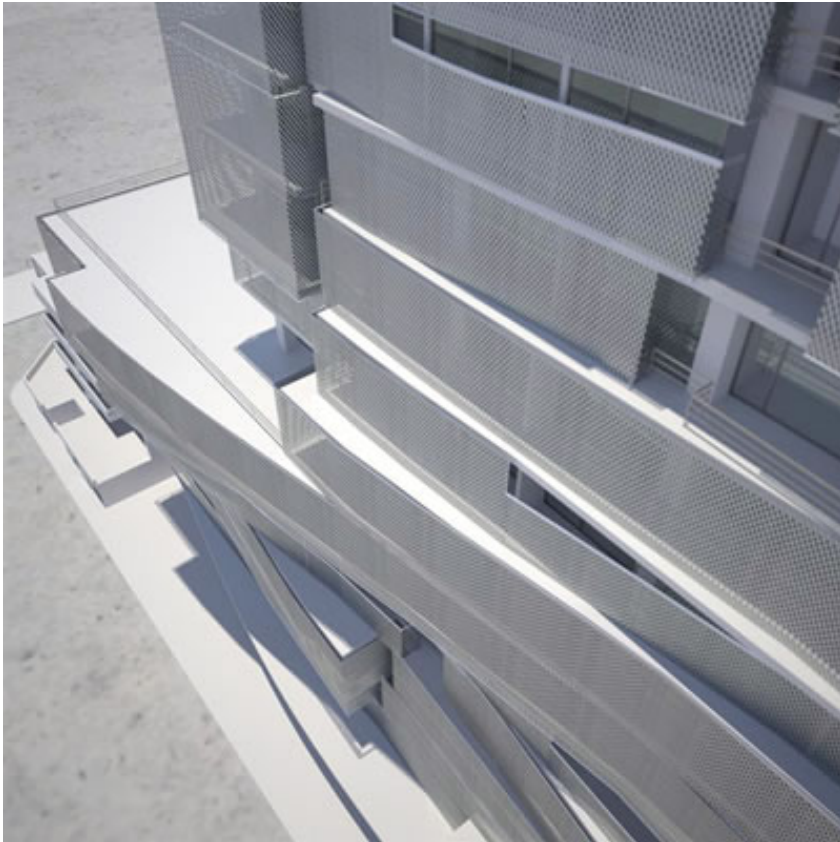


A stainless steel screen is applied to the surface of the building to mask the simple, repetitive units behind, as well as enhancing the geometries of the flowing balconies.

This scheme also considers the need for an integrated approach to the design of the two major building volumes. Rather than simply designing a 15 story residential building with an adjacent 7 story commercial building, we studied an approach that creates a seamless transition of the two elements. With this scheme, however, we utilized the residential balconies as a design element that extends into the commercial zone.

While the actual usage remains separated, this strategy allows for a similar design aesthetic

throughout.







Architectural rendering of the Taipei Tower entrance, showing the cantilevered upper level and the glass-enclosed atrium.



Exterior view of the Taipei Tower facade, highlighting the perforated metal screens and the stepped design.