

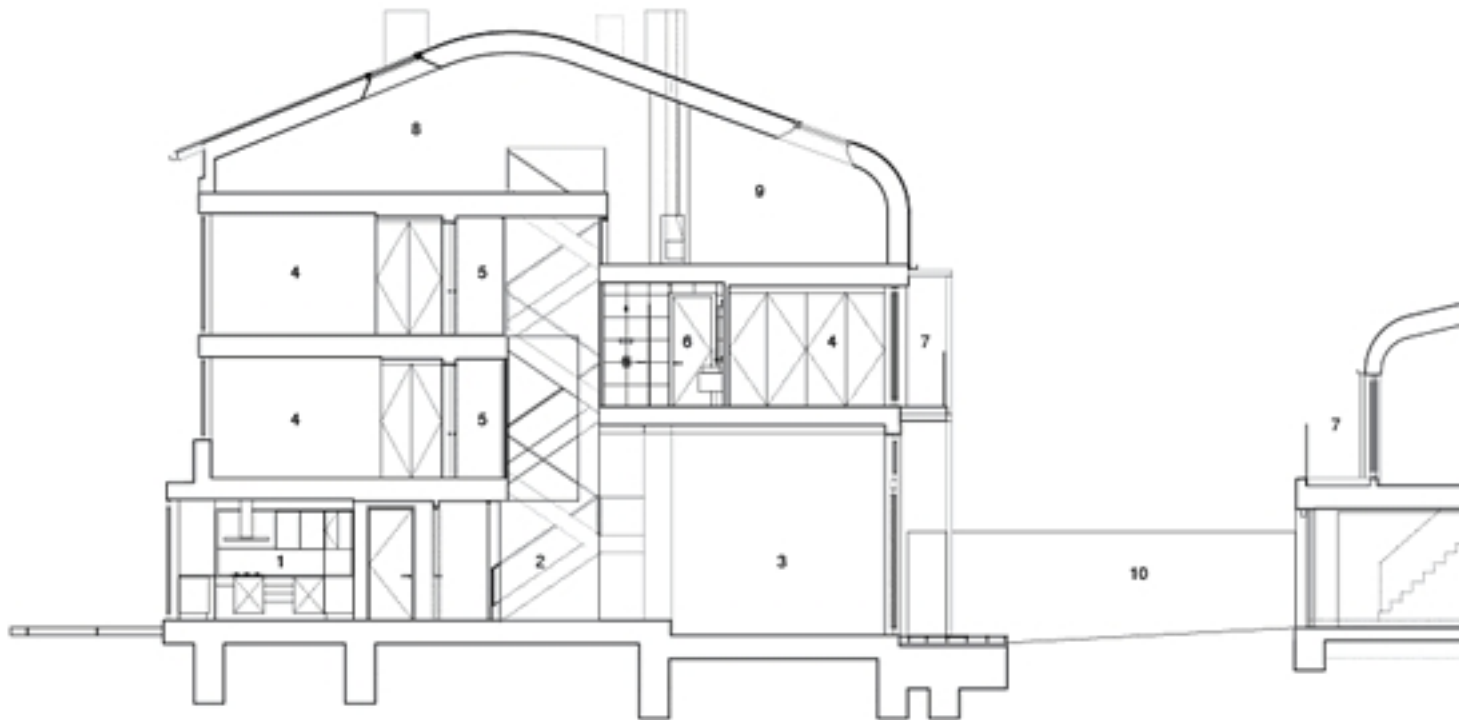


The four 400sm semi-detached houses form part of a row of substantial properties that showcase the 400-unit Accordia development for Countryside Properties, currently shortlisted for the 2008 Stirling Prize.

Inspired by the array of eccentric villas along Brooklands Avenue, the houses provide a flexible open plan layout with internal spaces varying in height and orientation within the envelope defined by FCB Architects' high density, sustainable masterplan.



High quality materials, design and construction are essential to the success of the project.



SECTION	1 Kitchen	7 Terrace
	2 Dining room	8 Studio
	3 Living room	9 Family room
	4 Bedroom	10 Garden
	5 Galleria	11 Garage
	6 Bathroom	12 Studio



Living Room, Accordia Sky, Cambridge, UK, Alison Brooks Architects, 2006 House and Garden, Winter, 2006