



Located in a vibrant neighborhood in Vancouver, Canada, the Sunset Community Centre was conceived as a link between nature and the multi-cultural communities that surround it.

The original Sunset Community Centre was sited two blocks from the nearest major street, lacking visibility and accessibility. To better serve the community, the re-development of the community centre situates the building on Main Street, a major north-south thoroughfare while sitting harmoniously among the fields, greenhouses and planting beds of the adjacent city nursery.

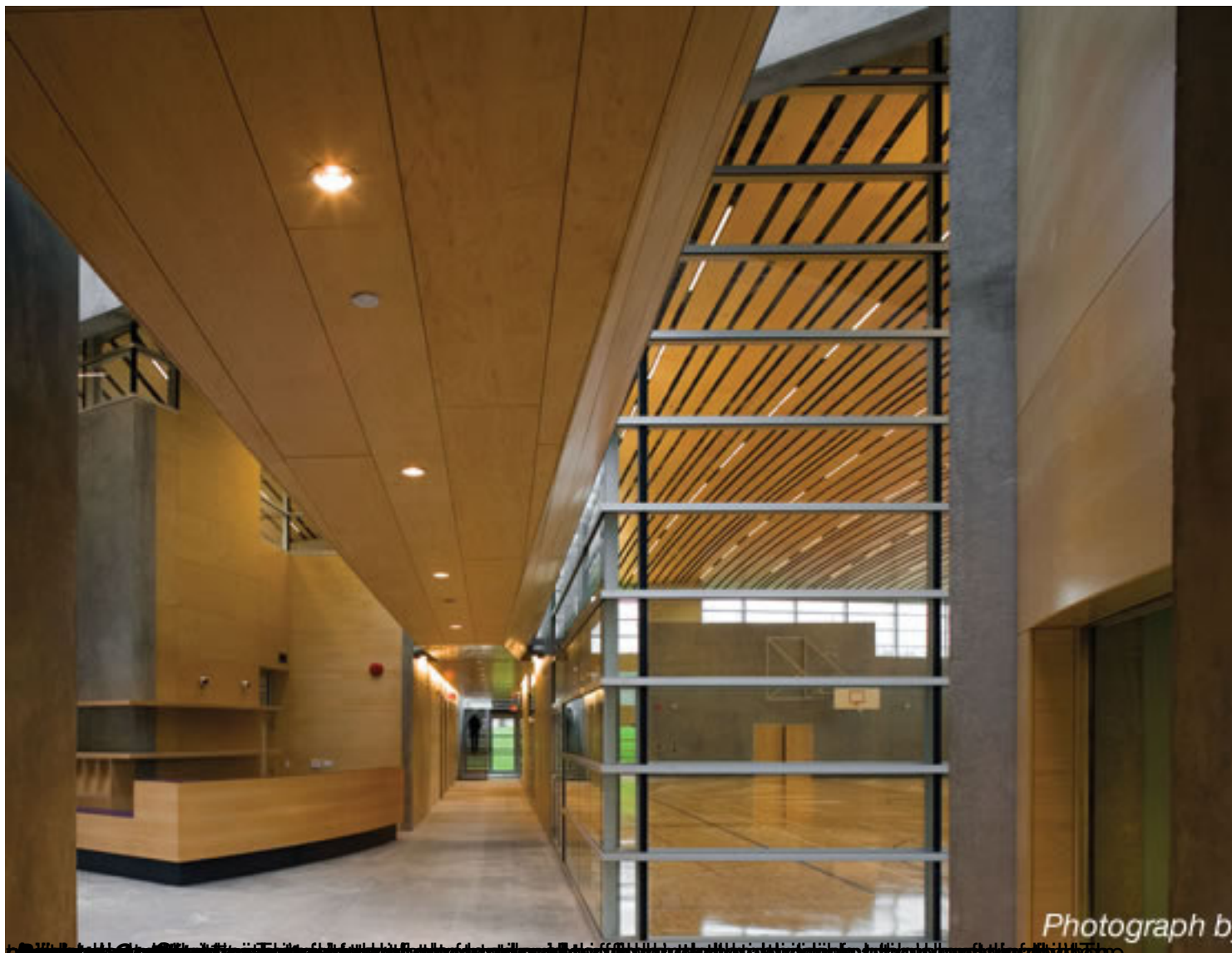


Comprised of five core components, Sunset Community Centre is capped by a dramatically curved roof, which in turn generates a series of curves and vibrant forms in the walls and floors below. The five main sections—administration, gymnasium, multipurpose, fitness, and preschool/youth activities—are united by double-height corridors and a cantilevered second floor walkway.





Photograph by Nic Lehoux



Photograph by [unreadable]

Read the full story on Bing Thom Architects' work on the Sunset Community Centre in Vancouver, Canada.

More on Bing Thom Architects:

[About Bing Thom Architects](#)

Featured Projects



[Central City in Surrey, British Columbia](#)

As a part of the Greater Vancouver Regional District and one of the fastest growing cities in Canada, the City of Surrey in British Columbia has the catalyst for a new urban core in the

Central City project. Challenging the context in which it is situated with its form and scale, this large mixed-use project integrates 450,000 square feet of academic space for Simon Fraser University, 500,000 square feet of office space and 50,000 square feet of retail space with an existing 700,000 square foot regional shopping centre.