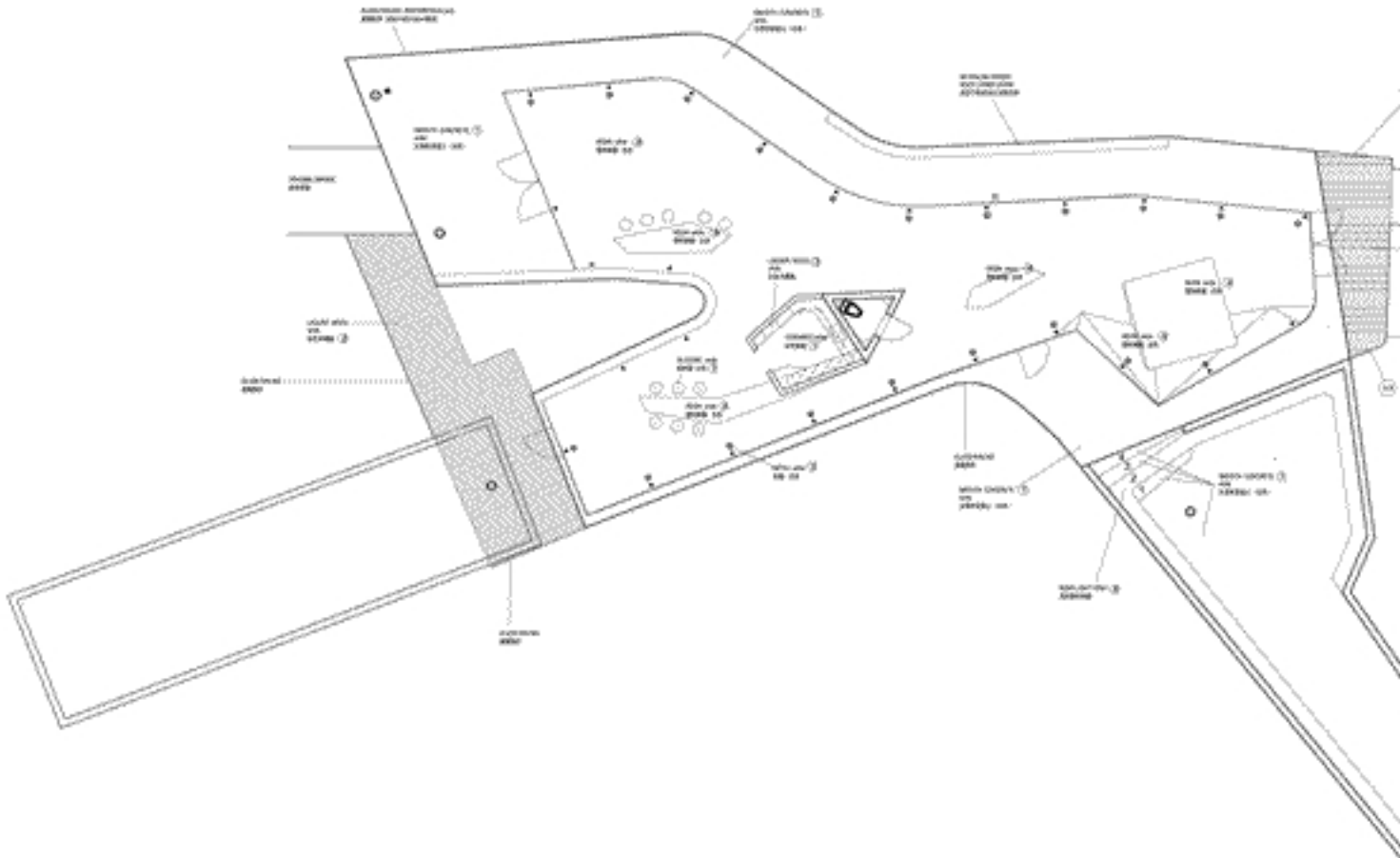




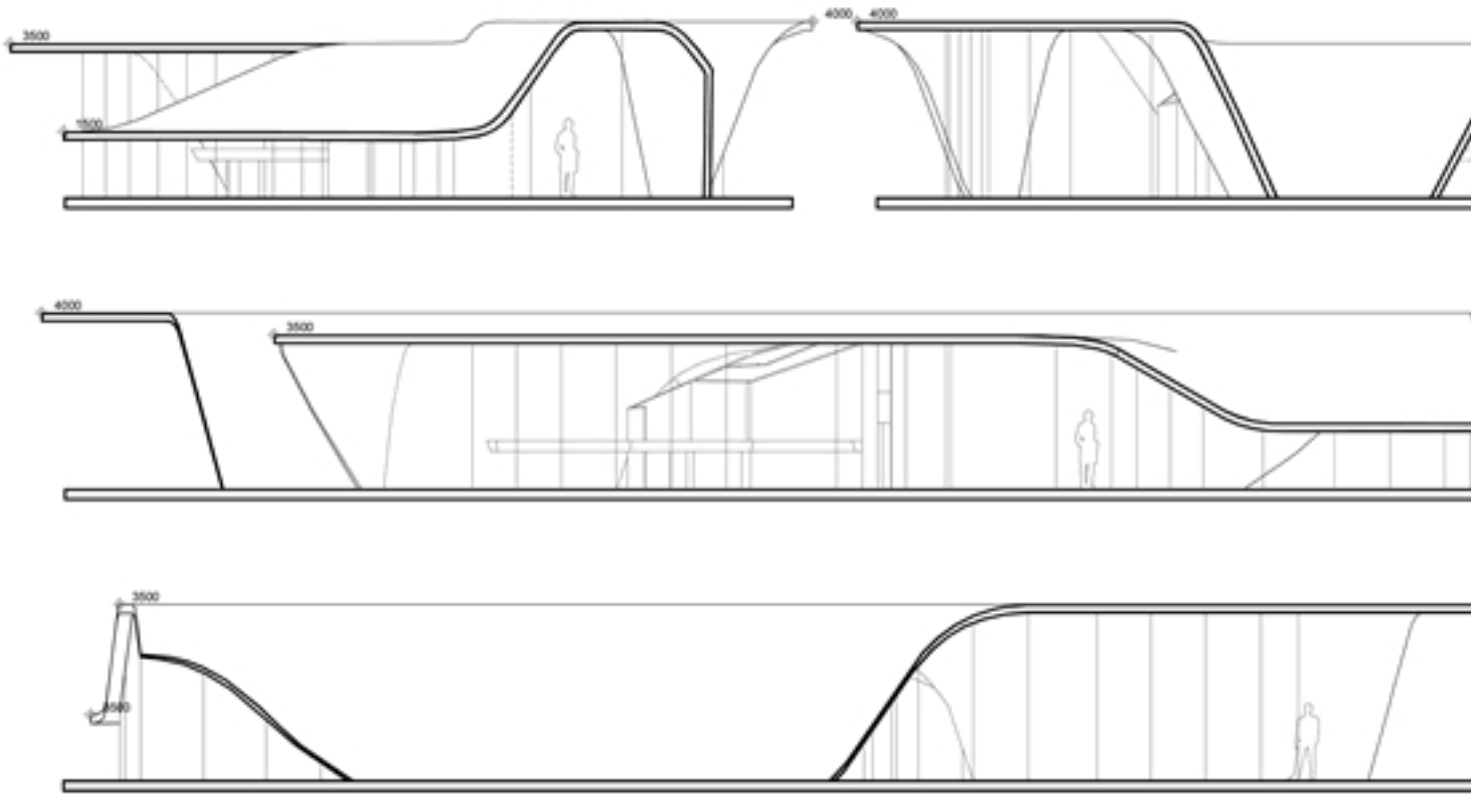
Economically and geographically, the rapid expansion of Beijing has had a profound effect on the city's periphery, subjecting areas within one hour's drive of the capital to furious residential development.

The undulating beauty of the landscape in these areas exists in marked contrast to the repetitive, planned efficiency of the suburbs rushing out to meet them. The challenge of this project was to create an architectural expression that could respond to this natural context.





Plan



Elevations



Featured Projects by MAD:

