



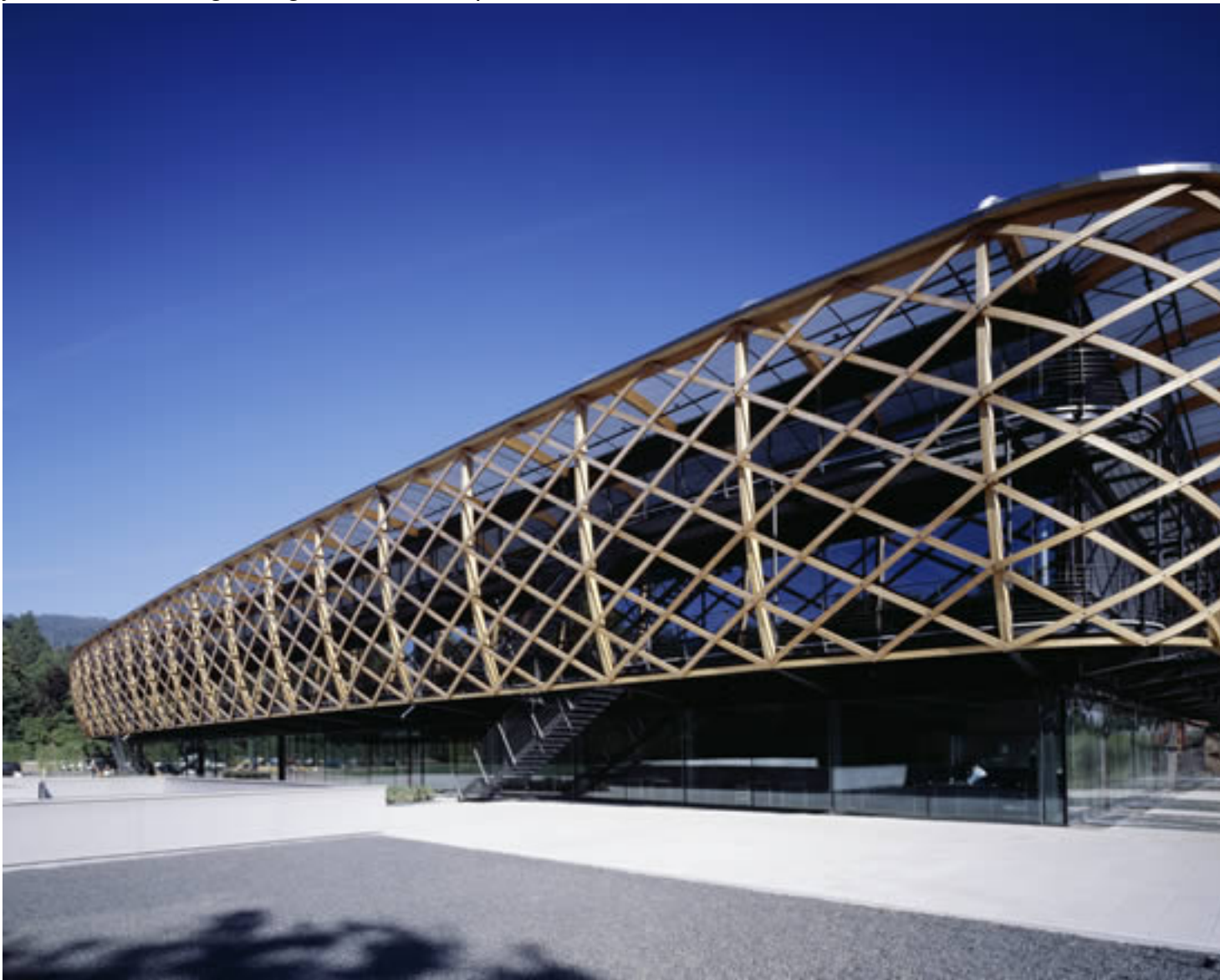
□□

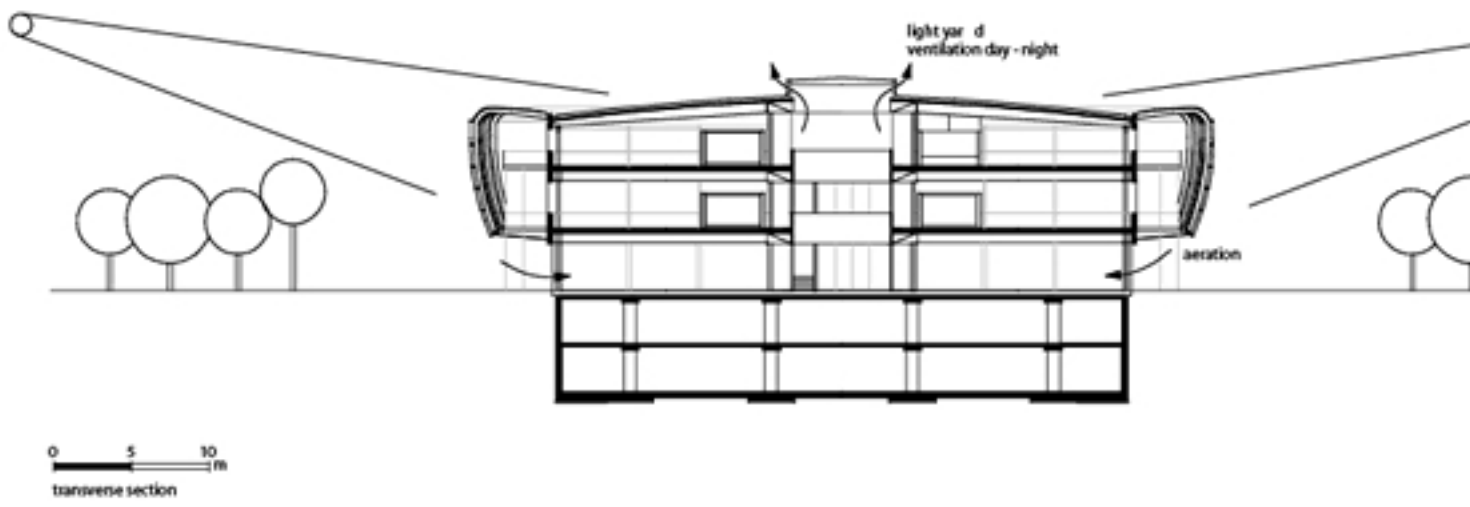
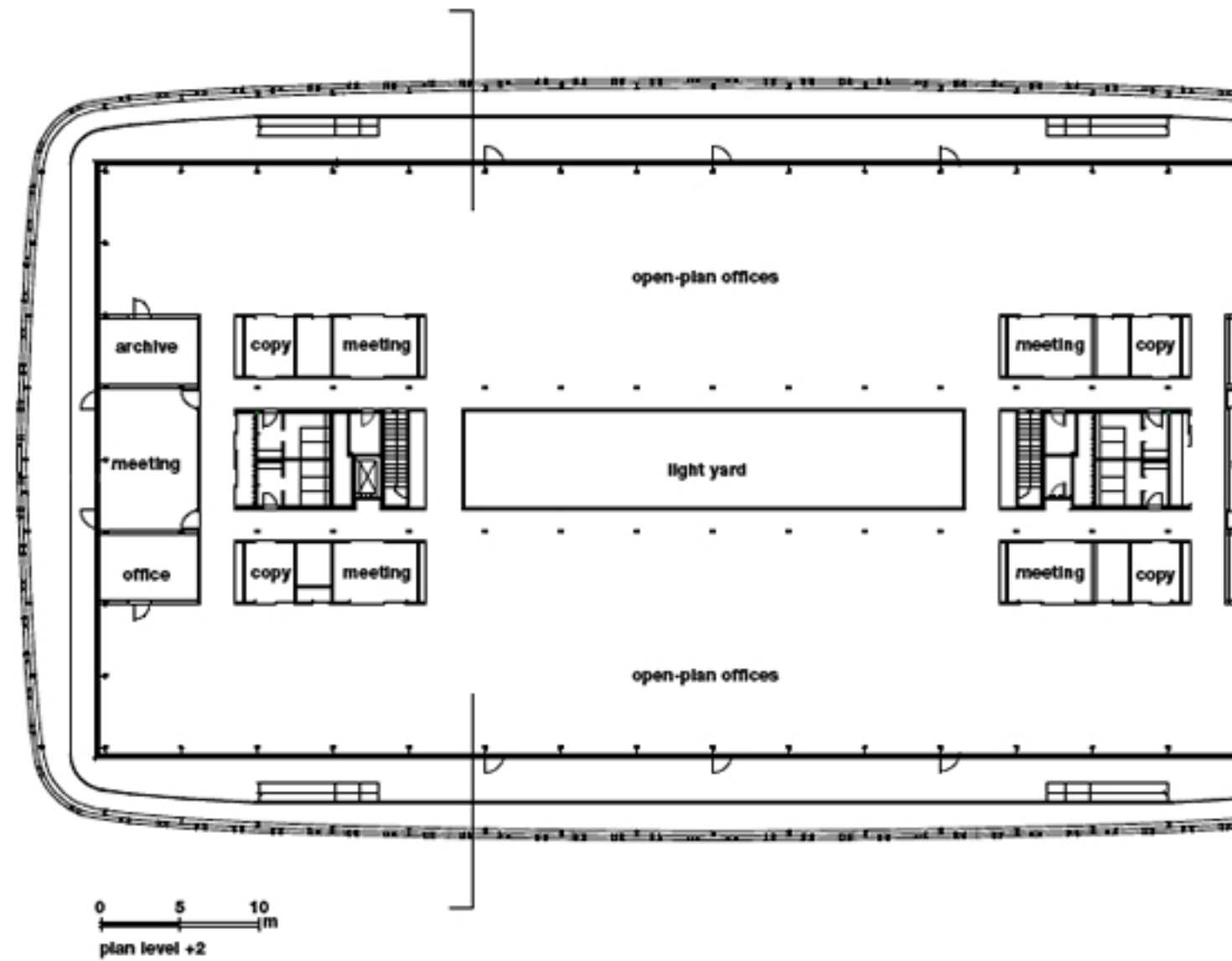
**This office building rises from its surroundings with a distinctive exterior; a shell structure of intertwined wooden elements, covering a transparent structure of glass and steel.□ Transparency and lightness make the essential ingredients of the formal concept.**

The bended wooden diamond elements, sprouting from balconies, enter in a dialogue with the textile membrane that helps the building integrate in the surrounding landscape and protects the construction from bad weather conditions and excessive exposure to the sun.

Natural illumination penetrates the building from all sides and enhances the visual impact of the internal volumes, the different textures and materials that are used, guaranteeing a crisp visual cleanliness.

As desired by the client, the project fulfils the highest standards of comfort thanks to highly developed integrated management systems, ranging from the air conditioning to the illumination system, without neglecting the relationship with the aesthetics of the location.







© 2009 Hugo Boss AG. All rights reserved. The information contained herein is confidential and intended solely for the individual named. If you are not the named individual you should not disseminate, distribute or copy this e-mail. Please notify the sender immediately by e-mail if you have received this e-mail by mistake and delete this e-mail from your system. If you are not the named addressee you should not disseminate, distribute or copy this e-mail. Please notify the sender immediately by e-mail if you have received this e-mail by mistake and delete this e-mail from your system. If you are not the named addressee you should not disseminate, distribute or copy this e-mail. Please notify the sender immediately by e-mail if you have received this e-mail by mistake and delete this e-mail from your system.



© 2009 Matteo Thun Architects. All rights reserved. This document is confidential and intended solely for the use of the individual user. It is not to be distributed, copied, or used for any other purpose without the express written consent of Matteo Thun Architects.





© 2009 Matteo Thun & Partners. All rights reserved. This document is confidential and intended solely for the individual named. If you have received this document by error, please notify us immediately by email at [info@matteothun.com](mailto:info@matteothun.com) or by phone at +41 76 700 7000. No part of this document may be reproduced, stored in a retrieval system, or transmitted in any form or by any means, electronic, mechanical, photocopying, recording, or by any information storage and retrieval system, without the prior written permission of Matteo Thun & Partners.



Copyright © 2009 by the author(s). All rights reserved. No part of this publication may be reproduced, stored in a retrieval system, or transmitted, in any form or by any means, electronic, mechanical, photocopying, recording, or by any information storage or retrieval system, without the prior written permission of the copyright owner(s).







Architect: Matteo Thun, Architect - Strategic Business Unit, Hugo Boss Industries in Coldrerio, Switzerland and self service  
to be used as a beginning of a new era of opening up the company to the public.

