



Ofis arhitekti produced a great example of the integration of a contemporary modern construction next to more traditional entities. A great proof that a contemporary house can distill the essence of a local traditional architecture while avoiding the simplistic imitation of the past.

The hut is situated in a small Alpine village, part of Triglav national park with very strict rules of construction and architecture design. The client bought the site together with existing construction permit for the generic project. Demand was not to change construction permit but change the elements of the house to suit his family, sustainable design factor and open the windows toward the views.

Photographs courtesy of Tomaz Gregoric







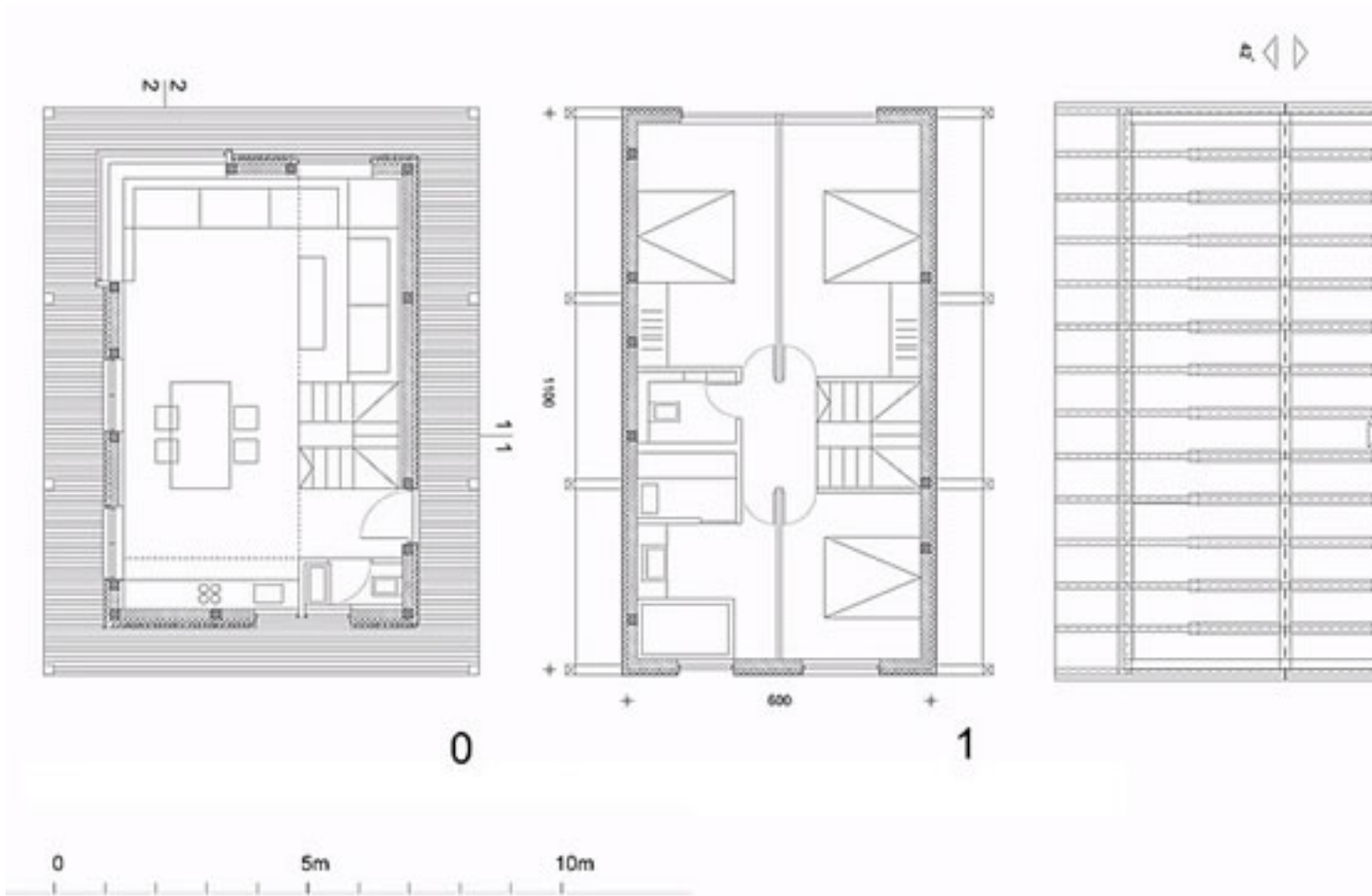
at the beginning of the project, the main goal was to create a modern building that would blend with the surrounding environment and provide a comfortable and functional space for the residents.











Plans







[Check Out More Projects from OFIS arhitekti](#)