



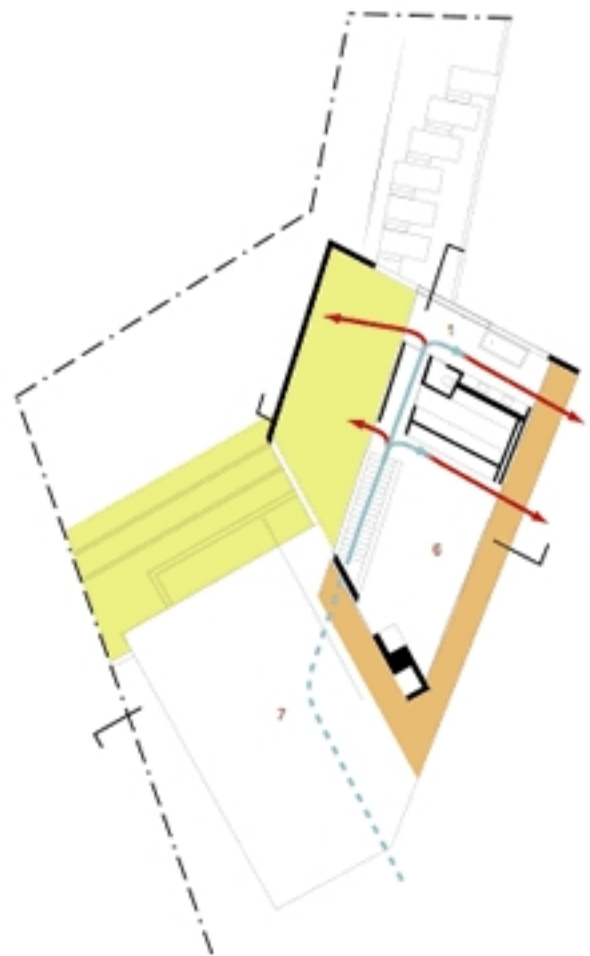
The Openhouse is embedded into a narrow and sharply sloping property in the Hollywood Hills, a challenging site that led to the creation of a house that is both integrated into the landscape and open to the city below.

Retaining walls are configured to extend the first floor living level into the hillside and to create gardens on two levels. The front, side and rear elevations of the house slide open to erase all boundaries between indoors and out, connecting the spaces to gardens on both levels.



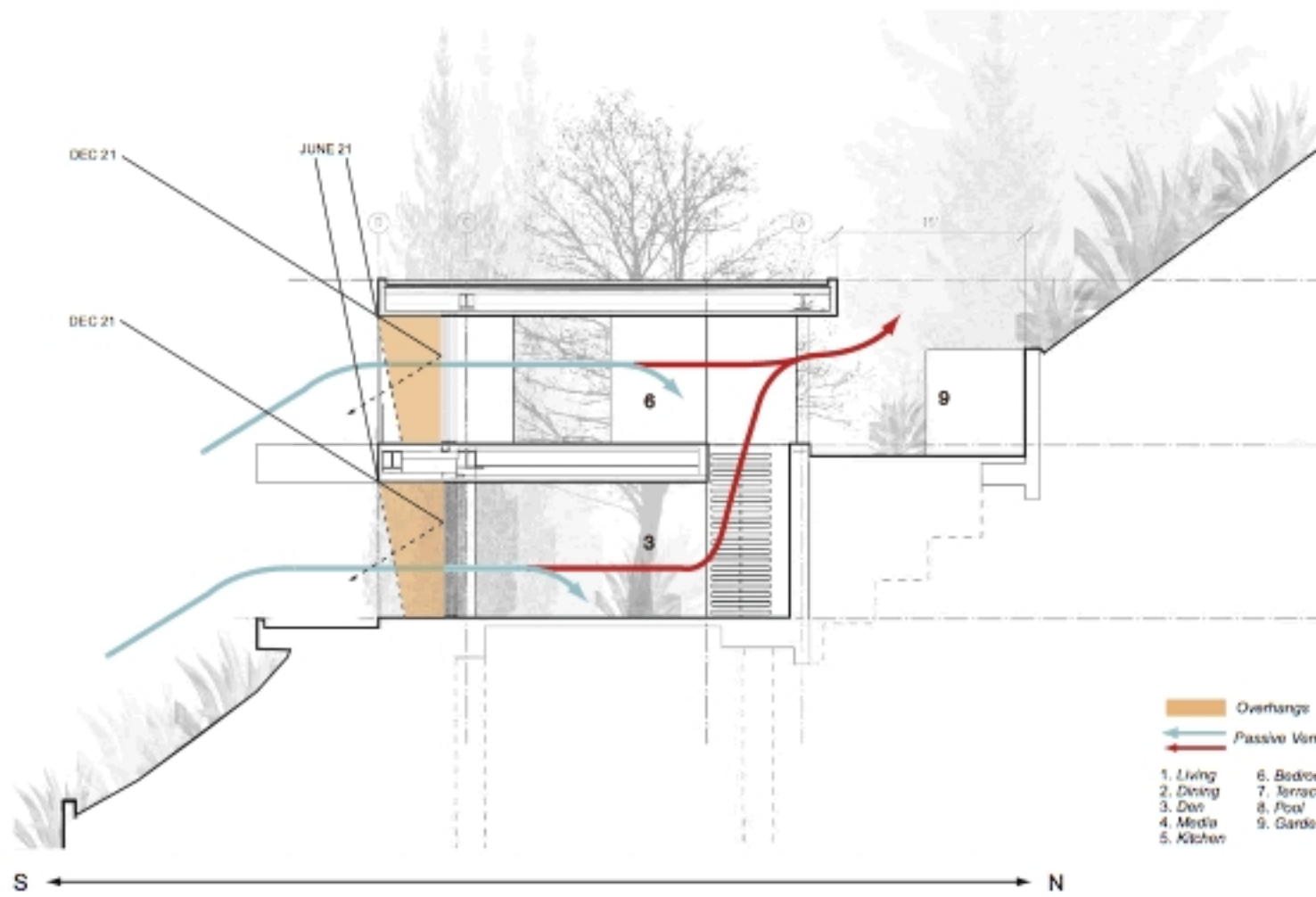


First Floor Level



Second Floor Level

Plans



Section illustrating overhangs, wind direction and height to control solar radiation and guide wind







bold light contrasts in the minimalist design. The glass walls and ceiling are only topped with glass and steel structural, which are cast in the glass and steel. The glass walls and ceiling are only topped with glass and steel structural,



The space is a perfect blend of modern design and natural materials. The dark tones of the furniture and fireplace contrast beautifully with the light-colored walls and floor. The large windows provide a stunning view of the city, making this a truly exceptional living space.







6th and 7th floor views of the open house, as shown in the Open House application site. The





White Concrete Cantilevered Balcony, Openhouse, Los Angeles, California, Design by XTEN Architecture, 2007. Photo by Brian

