

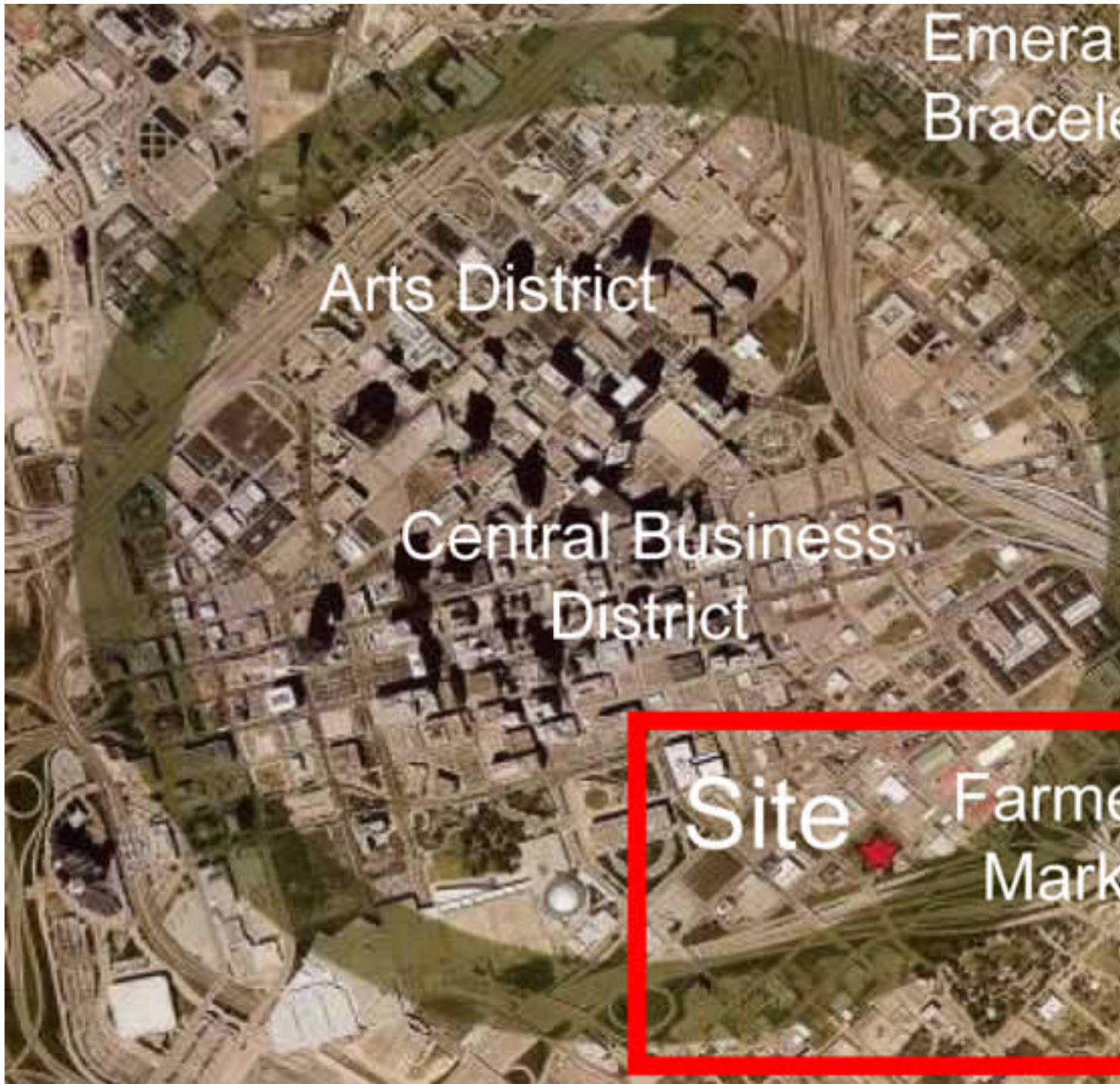


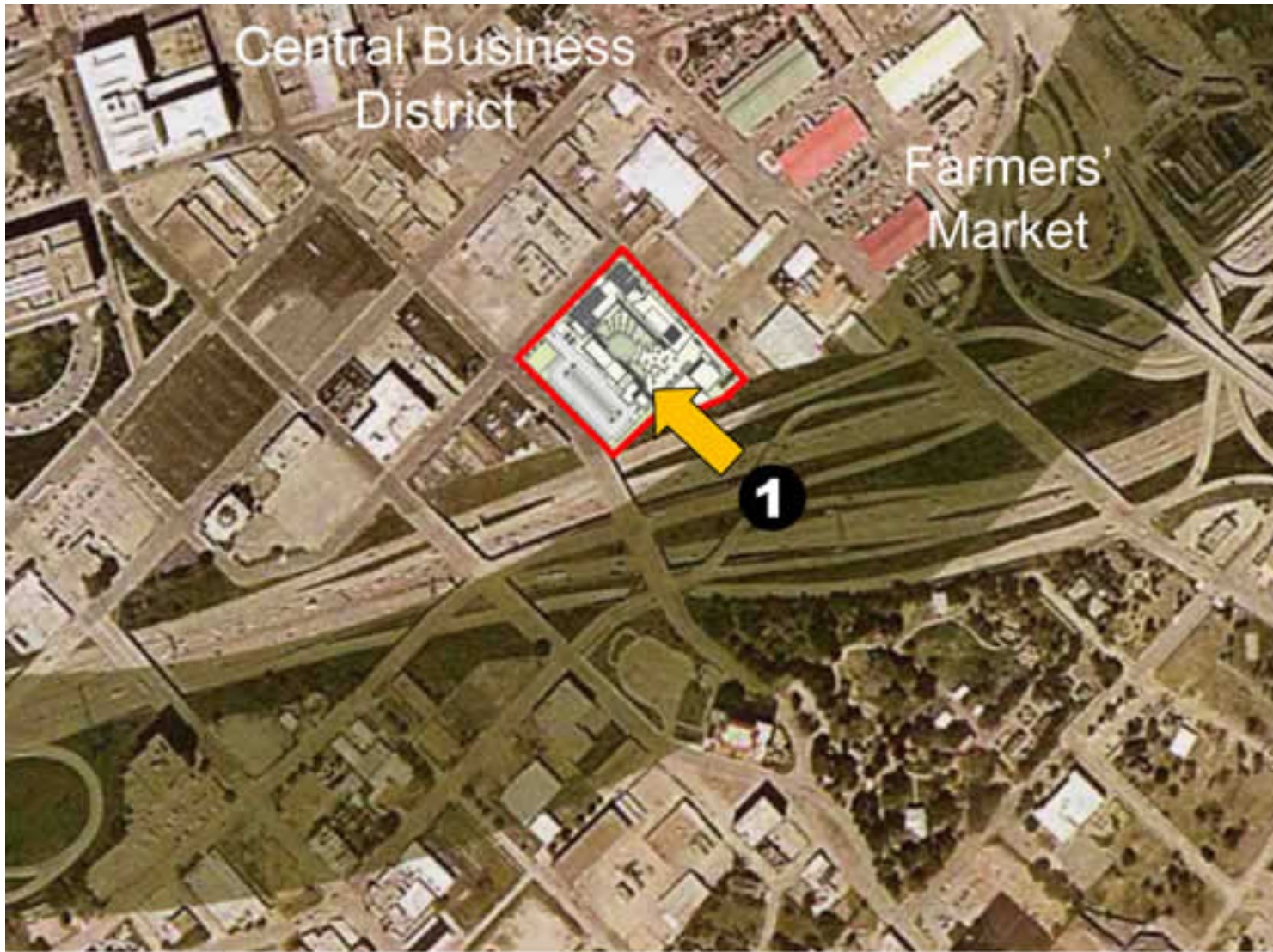
Every once in a while comes a project that we feel strongly about. It could be due to the vocation of the center and the sensibility of the function it addressed, or the approach taken by the architects and the city of Dallas in creating a complex intended as a safe haven within the heart of its community.

Naming the project “The Bridge” Overland Partners, worked for the integration of the Center to its neighborhood, the planning in this project, one of the recipients of the 2009 AIA Housing Awards, balances personal safety of guests and neighbors with hospitality. Temporary shelter is a reclaimed warehouse while transitional housing is on upper floors, separating disparate populations. Sleeping areas have translucent walls that welcome natural light and remind the City of the presence and function of the building.



Facing downtown, the transparency, light, and colors from the dormitories and classrooms act as a beacon of hope to the homeless at this most difficult time of day.





**1** View of site before construction



View of site before construction, showing the site's location relative to the city skyline and the Farmers' Market.



[Click here to see all plans](#)



This view is the arches to a destination site for the Overland Bridge in surrounding areas. The photo was taken by the architect.

# The Bridge - Homeless Assistance Center in Dallas, Texas by Overland Partners Architects

Thursday, 13 August 2009 09:26 - Last Updated Thursday, 12 September 2013 10:25



© Charles Davis Smith - AIA



© Charles Davis Smith - AIA



Original existing warehouse.







The Sleeping Pavilion (converted warehouse) opens into the Courtyard, Services Building and the Community Room.

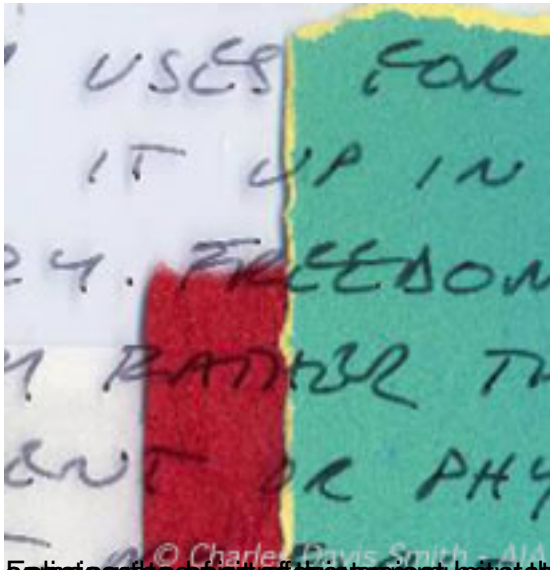


Place and door operations digital information communal spaces become a refuge from the street, and a



Charles Davis Smith - AIA

is a public building, a grand monument to the work of a man whose name is a source of inspiration to the world's



Exterior view of the building, showing the courtyard area with yellow umbrellas and people sitting on the ground.



Photographs and illustrations, courtesy of the AIA.