

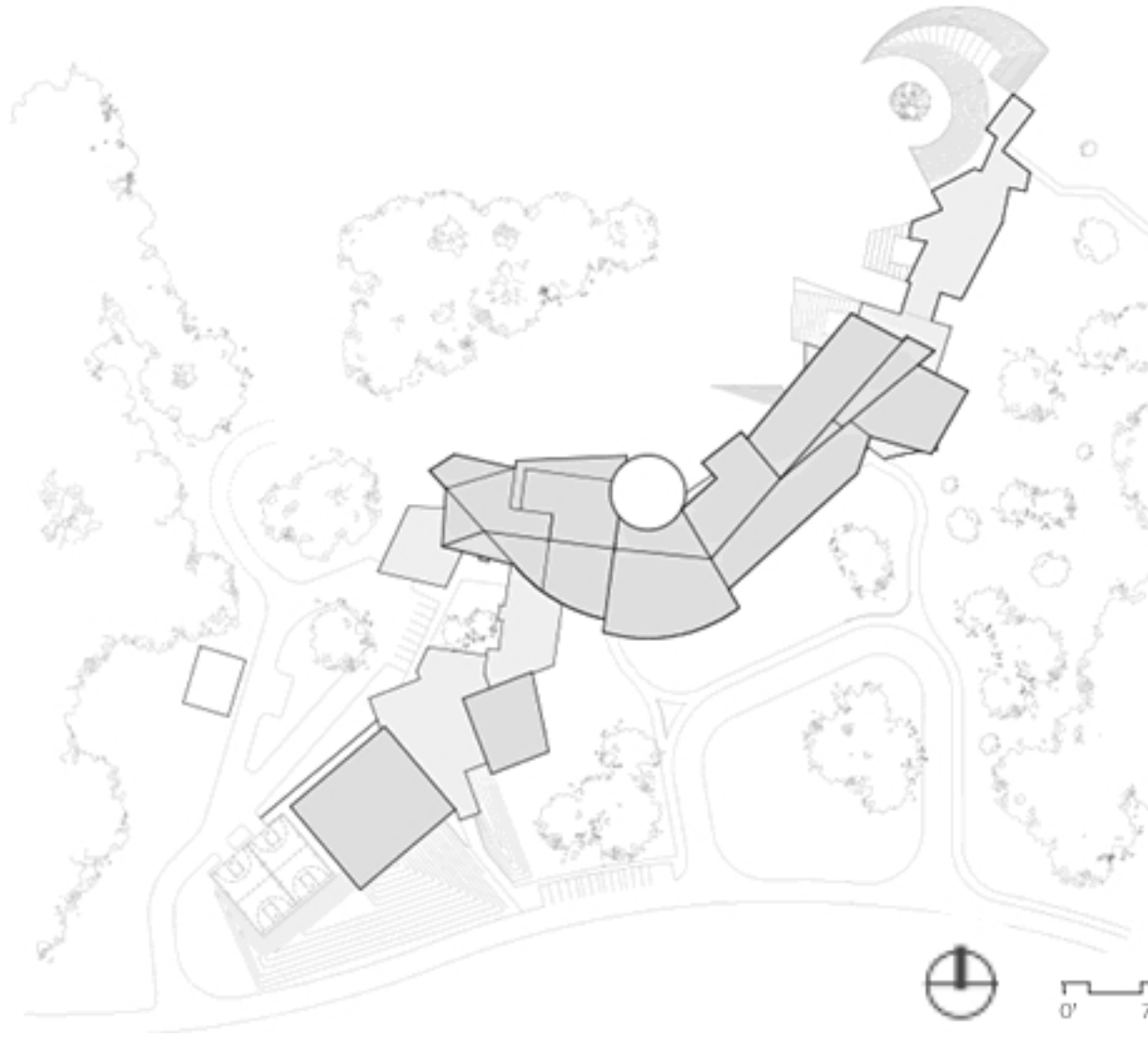


The Indian Community School of Milwaukee (ICS) is a privately owned and operated urban intertribal school educating American Indian children from kindergarten through the 8th grade and employing approximately 95 individuals.

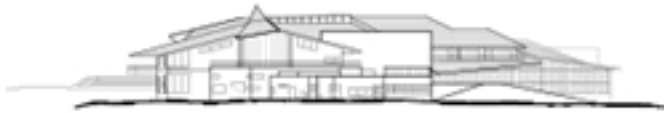
Serving the Indian community of metro Milwaukee for more than 30 years, ICS provides its students a unique learning experience. American Indian spirituality, languages, ceremonies, cultural identity, and pride are major components of the children's education. The school serves 309 children from 12 different tribes.







Site Plan



3 North Elevation



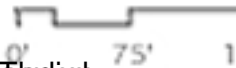
4 South Elevation



2 East Elevation



1 West Elevation



Architectural drawing of the Indian Community School in Milwaukee, Wisconsin, showing four elevations: North, South, East, and West. The drawing includes a scale bar (0', 75', 100') and a north arrow.





5/20/10, 2:00 PM, File: 19 Aug 2009 08:27, File: 19 Aug 2009 08:27, File: 19 Aug 2009 08:27, File: 19 Aug 2009 08:27, File: 19 Aug 2009 08:27, File: 19 Aug 2009 08:27, File: 19 Aug 2009 08:27, File: 19 Aug 2009 08:27, File: 19 Aug 2009 08:27, File: 19 Aug 2009 08:27





While the building is a celebration of the natural world, it is also a place of learning and discovery. The school's design is a testament to the power of nature and the importance of community.



Images courtesy of the Indian Community School via [their web site](#).