

Written by Taylor Manus

Wednesday, 16 September 2009 00:00 - Last Updated Wednesday, 16 September 2009 16:00

---



**Heller Manus Architects was awarded the contract to design the master plan for a crucial portion of Guangzhou's growing metropolitan area. With a population of 10 million, Guangzhou is China's third largest city and covers more than 3,720 square kilometers or nearly 1,450 square miles. Beating out several other entries, Heller Manus' proposal was selected by a commission of nine jurors including notable planning and architectural experts in China.**

Additionally, members of the Guangzhou public were asked to cast votes for their favorite design plan during a two week public viewing phase.

Written by Taylor Manus

Wednesday, 16 September 2009 00:00 - Last Updated Wednesday, 16 September 2009 16:00

---

## South Axis Plan







# Heller Manus Architects Selected to Lead the Design and Construction of Guangzhou's Southern Axis (U

Written by Taylor Manus

Wednesday, 16 September 2009 00:00 - Last Updated Wednesday, 16 September 2009 16:00

---



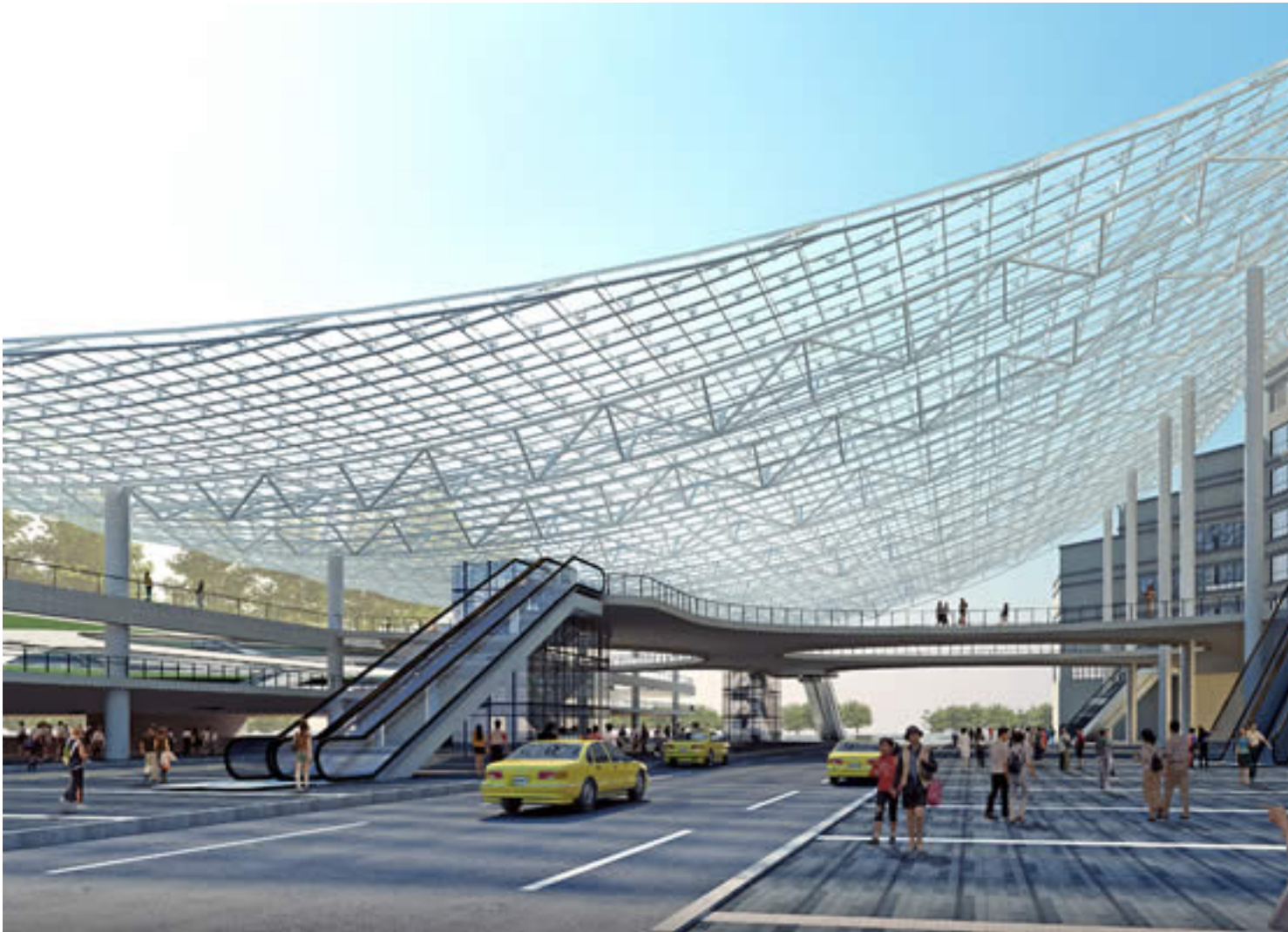


# Heller Manus Architects Selected to Lead the Design and Construction of Guangzhou's Southern Axis (U

Written by Taylor Manus

Wednesday, 16 September 2009 00:00 - Last Updated Wednesday, 16 September 2009 16:00

---

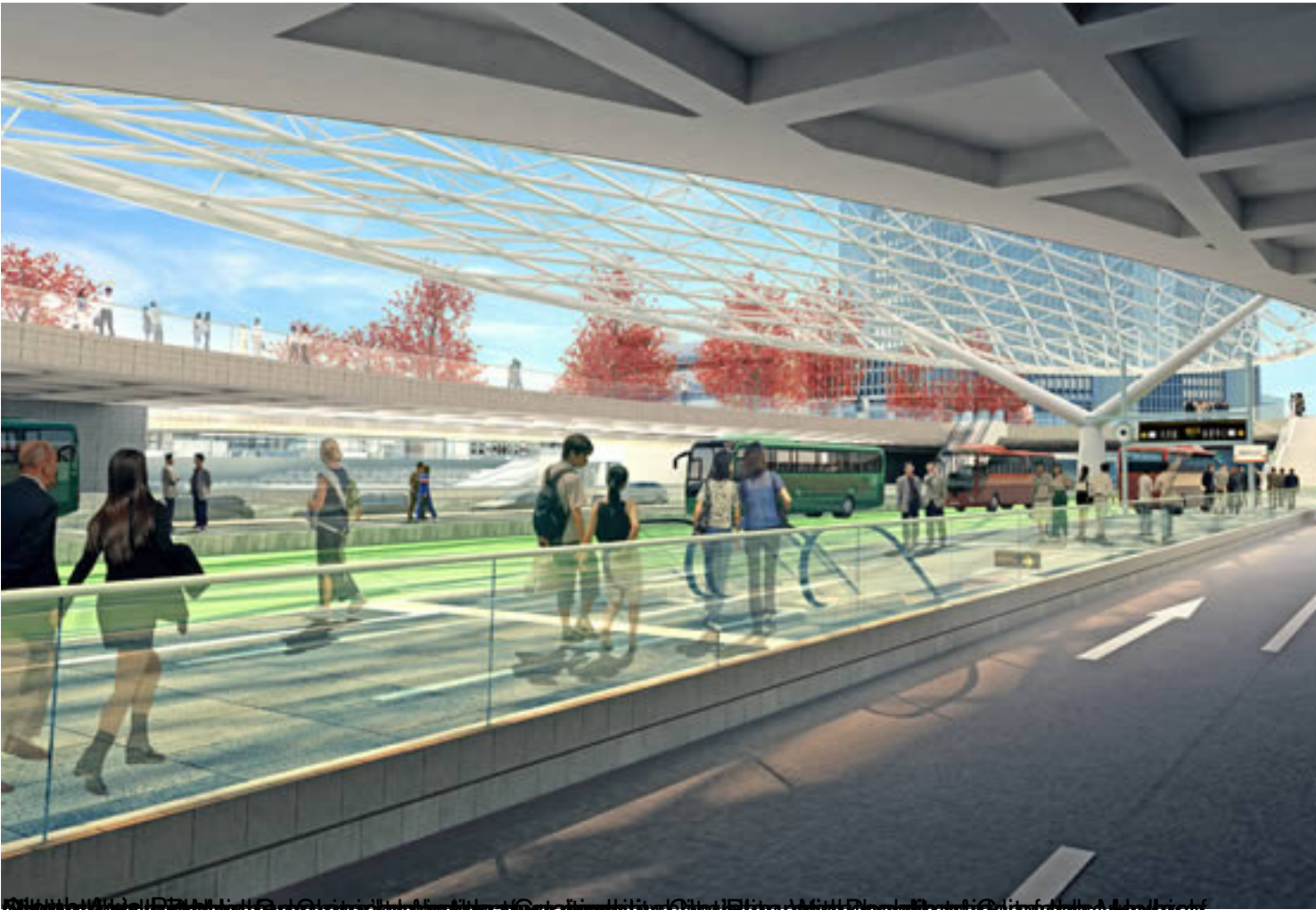


# Heller Manus Architects Selected to Lead the Design and Construction of Guangzhou's Southern Axis (U

Written by Taylor Manus

Wednesday, 16 September 2009 00:00 - Last Updated Wednesday, 16 September 2009 16:00

---



© Heller Manus Architects. All rights reserved. No part of this publication may be reproduced, stored in a retrieval system, or transmitted, in any form or by any means, electronic, mechanical, photocopying, recording, or by any information storage and retrieval system, without the prior written permission of Heller Manus Architects.



