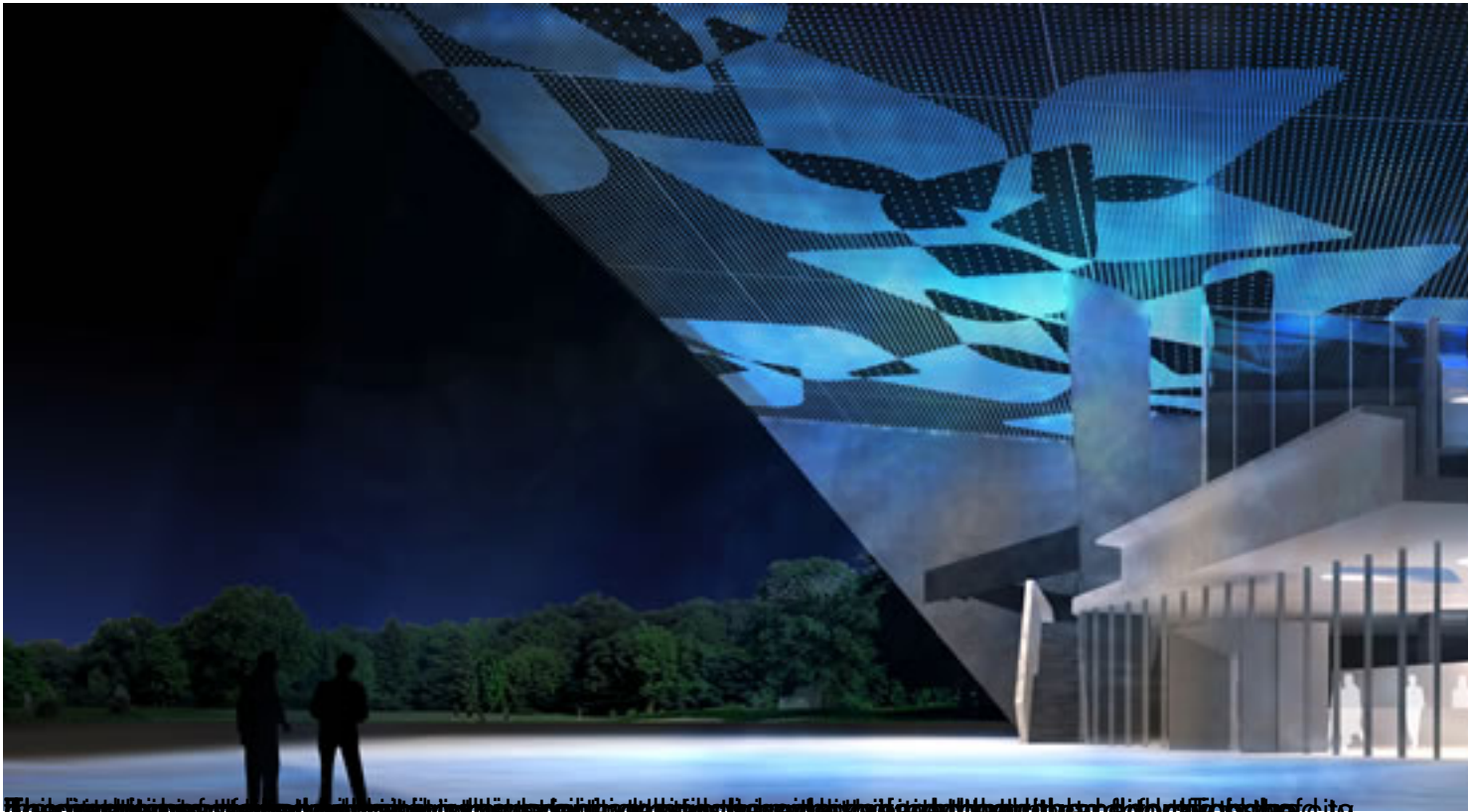
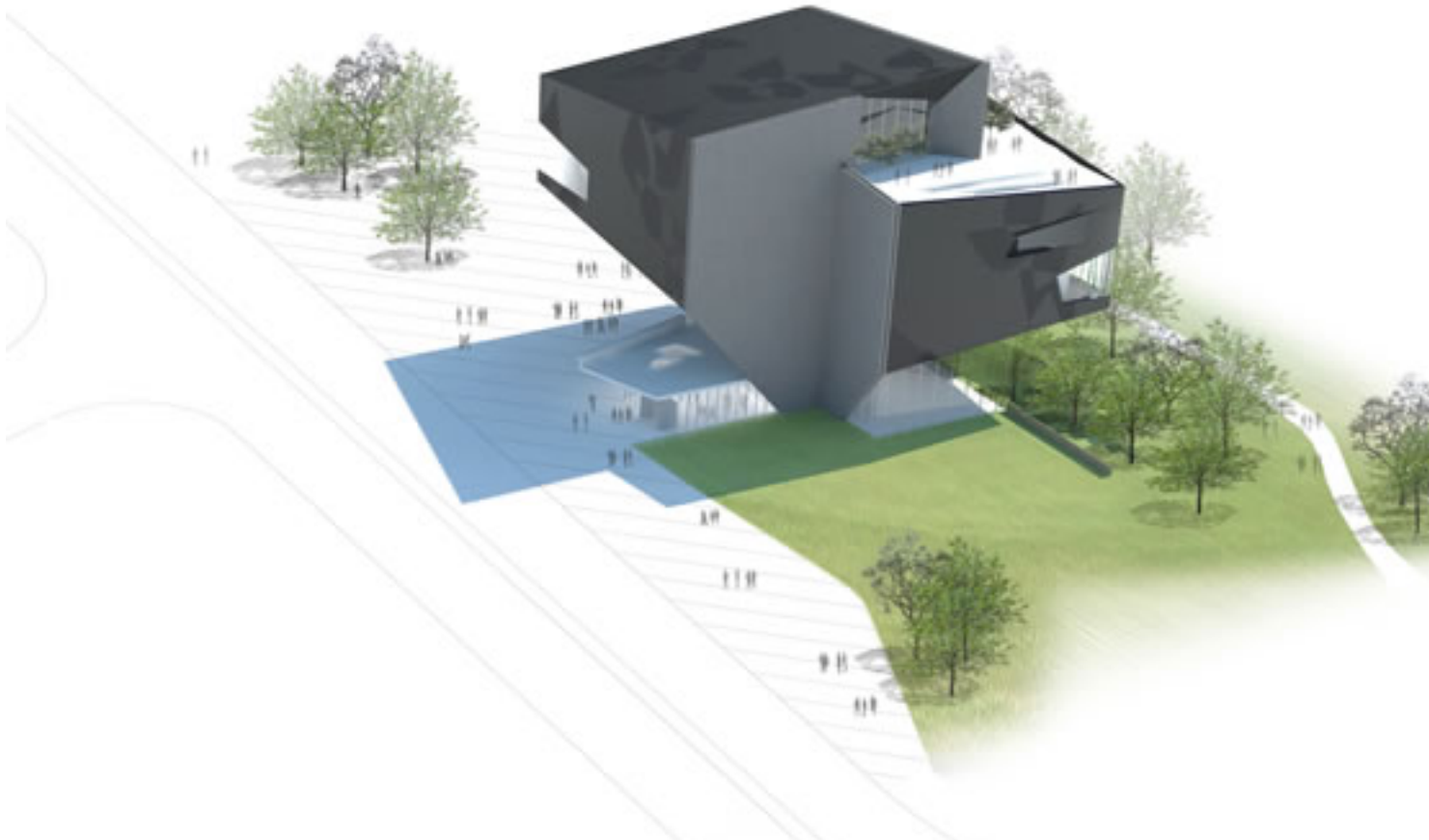


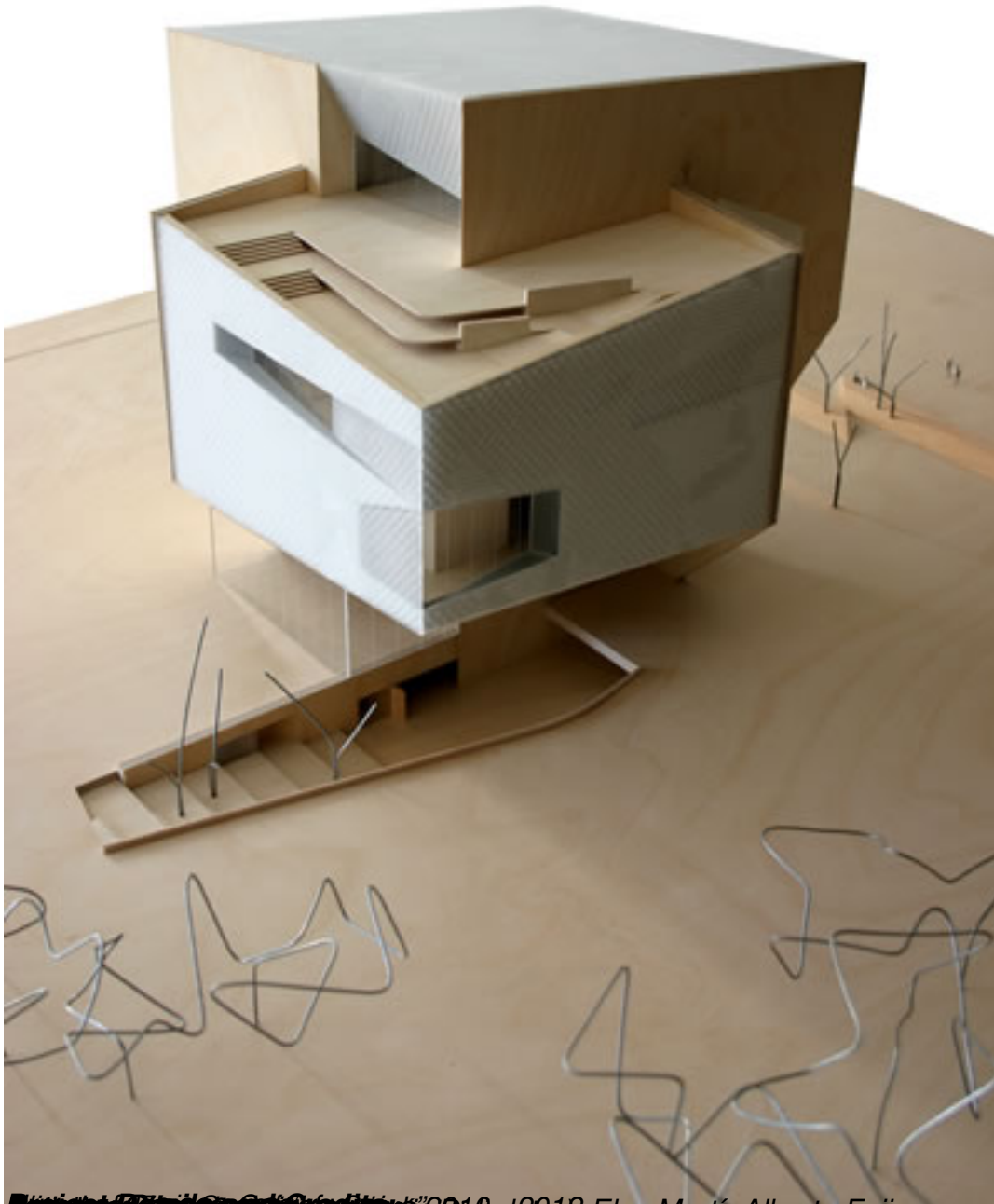


While developing their concept for the project, the architects felt the need to overcome two challenges. First, the building had impact its environment. As they expressed it : “capable of making the city”. The project should acheive this through its strong identity as well as newly generated public spaces. Second, building had to integrate within its environment, weaving a visual relationship with the city and the new park from the inside looking out and from the outside peaking in. "A building creating the city, and at the same time makes us a part of it as we inhabit it."





At the time of these times, as the architectural firm in the middle of the park, the architect wanted his



*Model of Caixaforum in Zaragoza, Spain, 2010, Elsa Martí, Alberto Feijoo*