

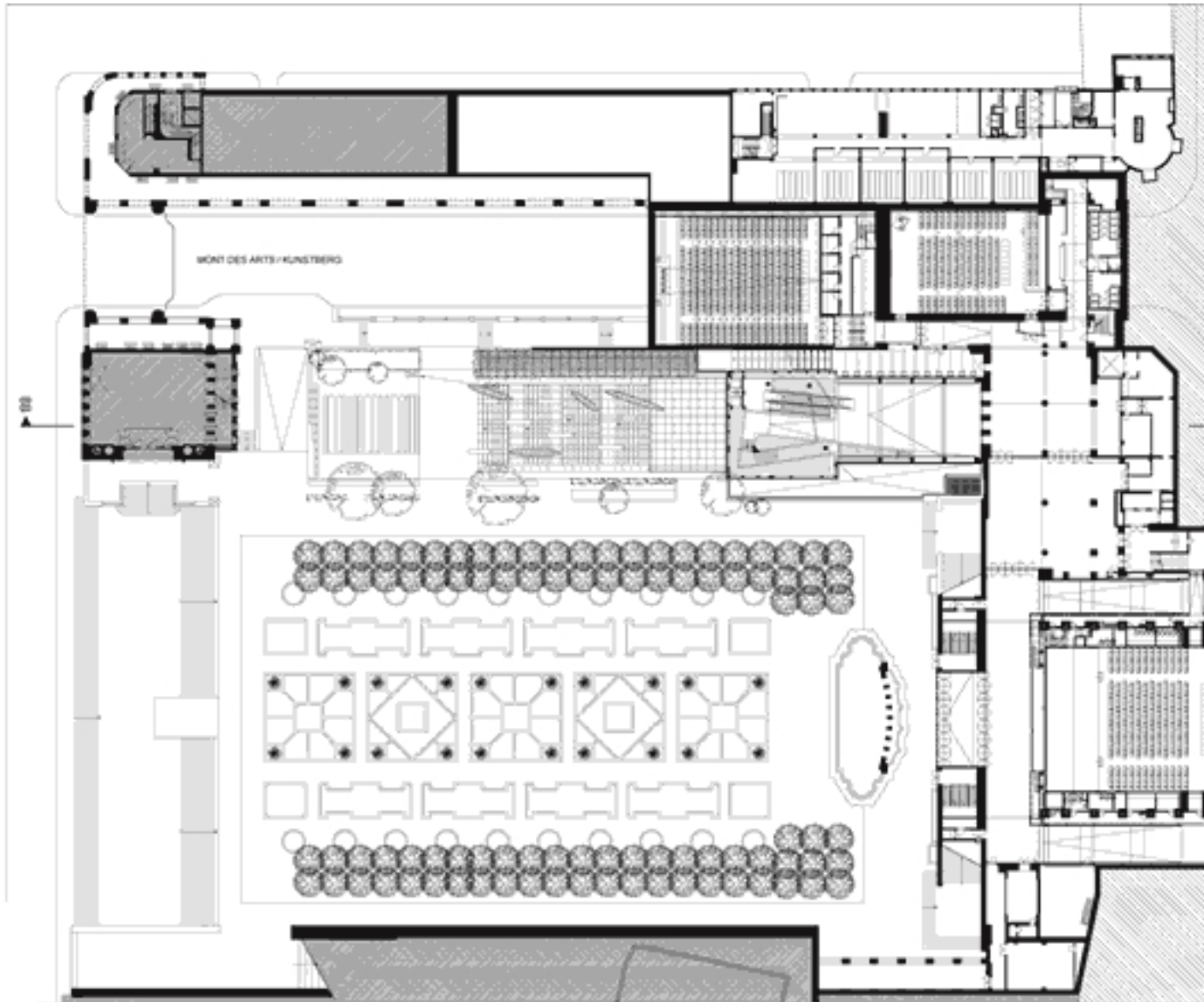


An architectural proposition to the city offers a newfound visibility to the former “Palais des Congrès” by means of a poetic emblem embodied in the glass cube that forms the

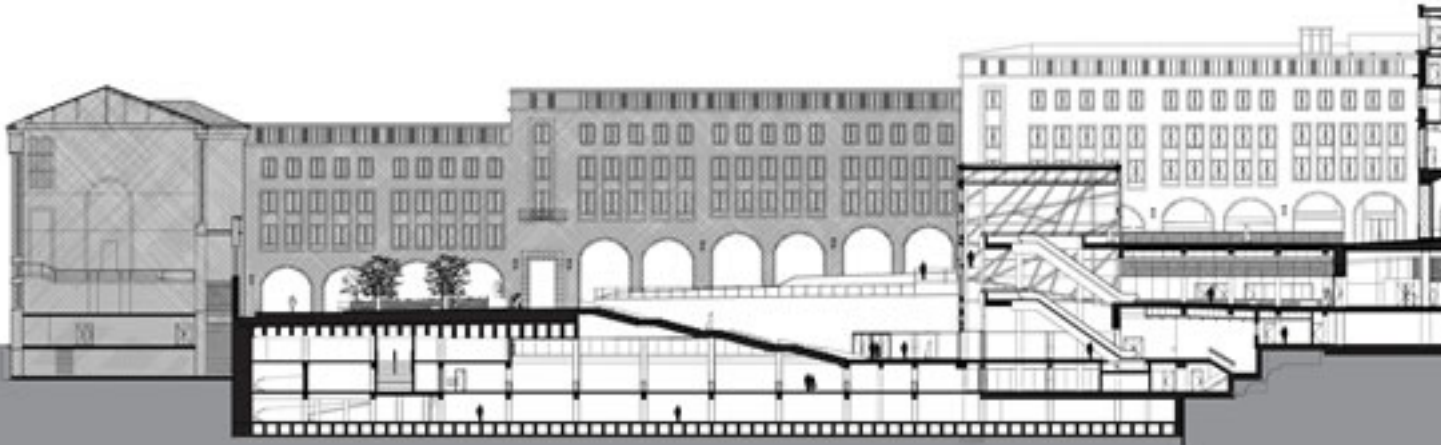
principal entry to SQUARE, Brussels Meeting Centre.

Its treelike structure and an aesthetic based on transparency and light, irresistibly evokes landscape architecture, takes root in history and projects the « Mont des Arts » into modernity. This monumentality, mild and poetic, dialogs with the image of the garden. Present and at the same time melting into the surrounding architectural landscape, it changes in materiality as the light and time of day change.





Ground Floor Plan



Flattened section of the Brussels Meeting Centre, showing the integration of the new building with the existing urban fabric.



© A2RC ARCHITECT



© A2RC ARCHITECTS - B. Struelens





© A2RC ARCHITECTS - G. De Kinder



© A2RC ARCHITECTS - G. De Kinder

Site plan of the office building of the Brussels Meeting Centre, showing the location of the building in the city of Brussels. The plan is a top-down view of the building's footprint, with various rooms and corridors labeled. The building is situated in a central area of the city, surrounded by other buildings and green spaces.





Budget, Quality and Time

© A2RC ARCHITECTS - G. De Kinder