



The new 300-room, five-star-rated Sheraton Incheon Hotel recently opened in New Songdo City, Korea, offering a new state-of-the-art facility in the heart of a new urban center. HOK provided architectural design, landscape design and sustainable design services for the new 500,000-square-foot, LEED® certified hotel.

Adjacent to the city's new Convention Center, the Northeast Asia Trade Tower and a large retail mall, the hotel is connected to the buildings through a series of plazas and landscaped areas,

and underground by a parking structure spanning the site.

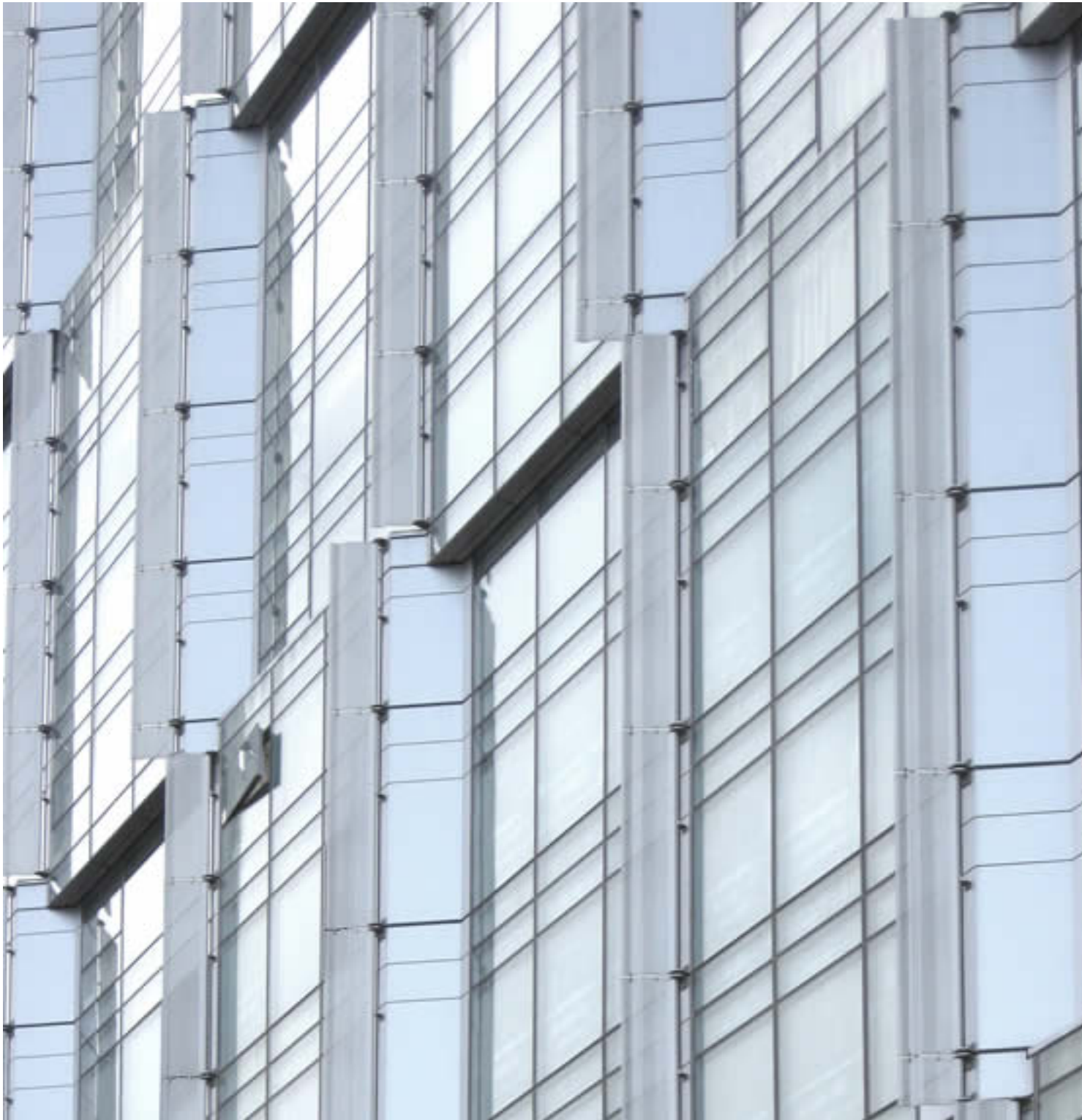
The tower section of the hotel includes 300 guestrooms and suites, a presidential suite and an executive lounge on the top floor. Hotel amenities, including ballrooms, function rooms, spa, gym, pool, restaurants and bar, are located on the five lower levels of the wing adjacent to the tower.

All photographs by Gale International











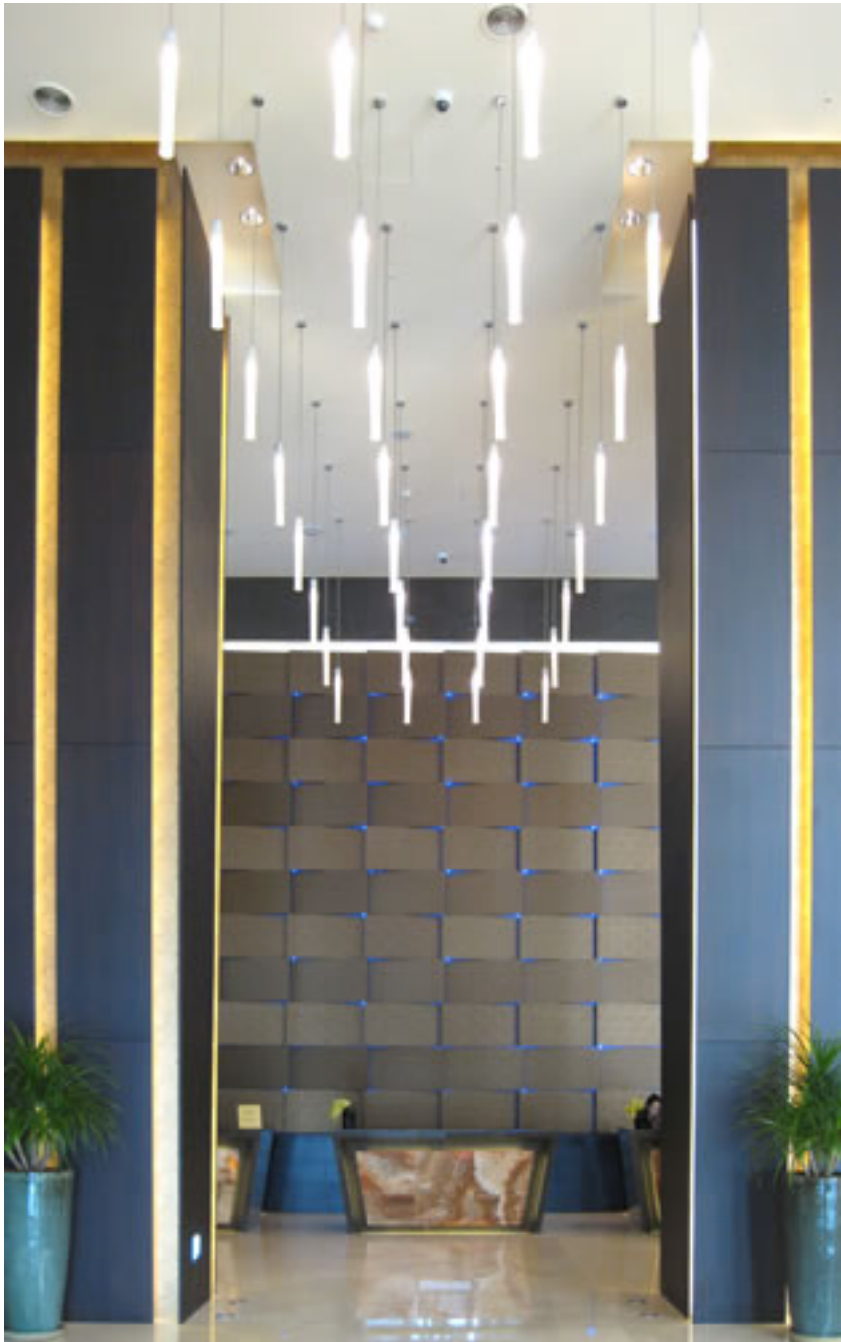


The Sheraton Incheon Hotel is a modern building with a glass facade and a prominent entrance canopy, set against a clear blue sky. The building features a grid-like pattern of windows and a sleek, contemporary design. In the foreground, there are young trees and a modern street lamp. A tall skyscraper is visible in the background.

















Sheraton Fitness





Left: Typical room Right: Deluxe double room



Presidential Suite