

The finalists of the annual PS1 Young Architects Program, curated by The Museum of Modern Art and P.S.1 Contemporary Art Center, were asked to present designs for temporary urban landscapes that incorporate elements of shade, water, seating, and bar areas for the expansive courtyard entrance of P.S.1. The competition program focused on designs which address sustainability, recycling, and reuse. The winning scheme by SO-IL Architects was selected January 22, 2010.

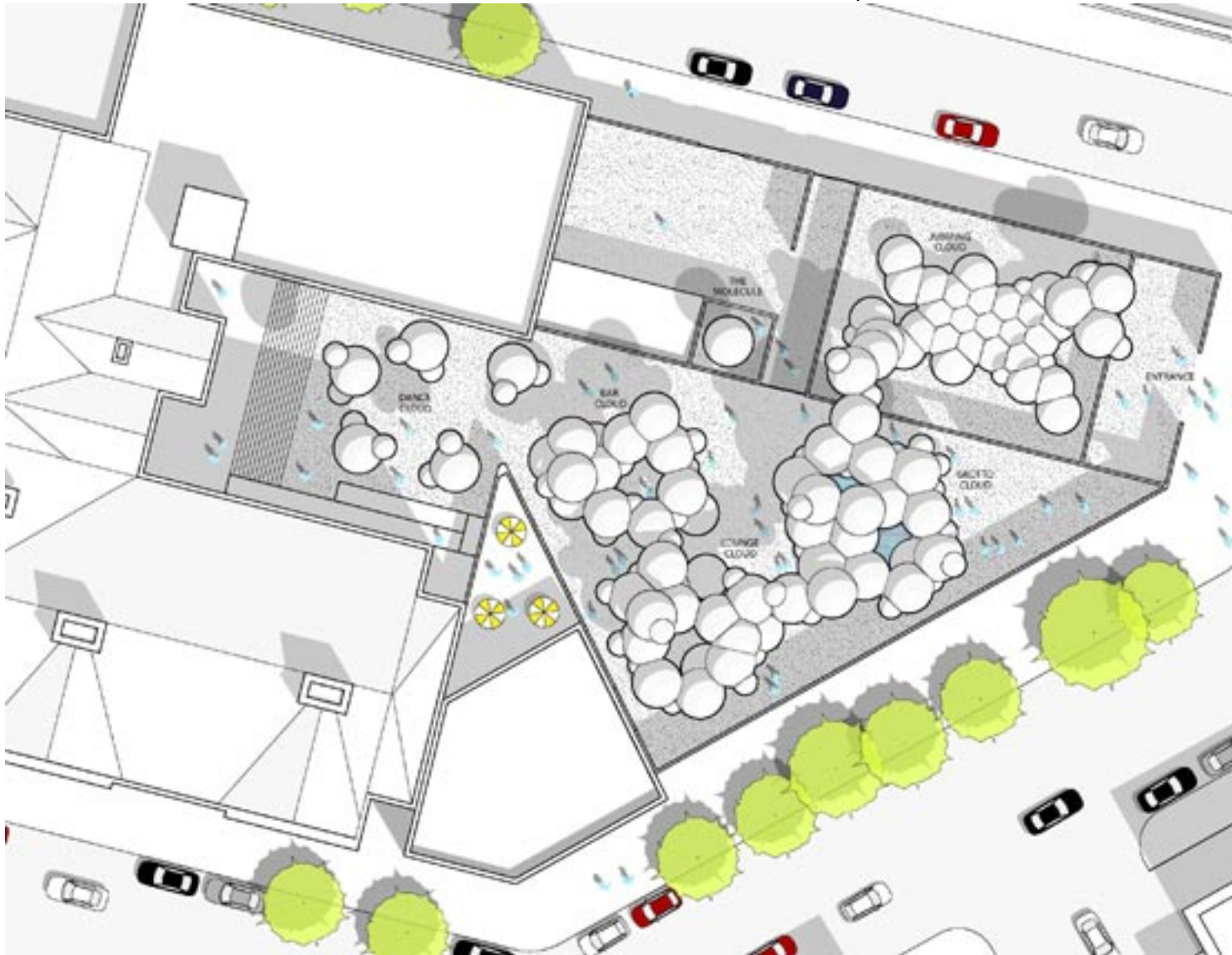


BIG sent us their proposal, we are featuring it in this post.

How can you make something temporary sustainable?

Building something in order to tear it down three months later seems like the epitome of excess

and wastefulness. BIG proposes a structure that creates maximum impact with a minimum of means, where human life unfolds to the fullest with minimum material expense.







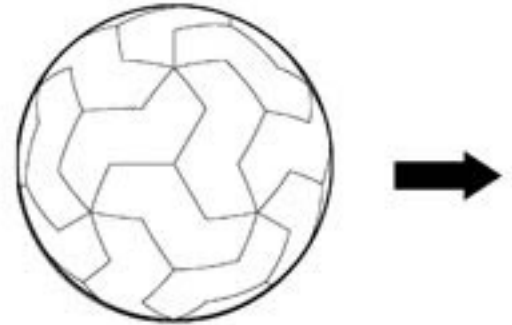


© 2010 BIG - Bjarke Ingels Group. All rights reserved. Photo: [unreadable]



RECYCLE

The fabric of the cloudscape is translucent recycled PVC from TaxyLoop (or similar). It is made from recycled truck bed covers and bags etc. reducing the environmental impact with 80% on average by eliminating the raw material extraction and production.



REUSE

The cloudscape is composed of spheres of two different composition of identical triangulated S-shapes. After the season, the S-shapes can be folded into Manhattan bag is given a unique number that is printed on the fabric and folding instructions. After the season the bags are numbered fragments of the total piece. PS.1 out of 7295.



[For a full](#) other information about the PS1 MoMA Young Architects Program please visit [their](#) .



BIG OFFICE OF ARCHITECTURE, NEW YORK / USA Tokarz, Alysen Hiller, Xi Chen